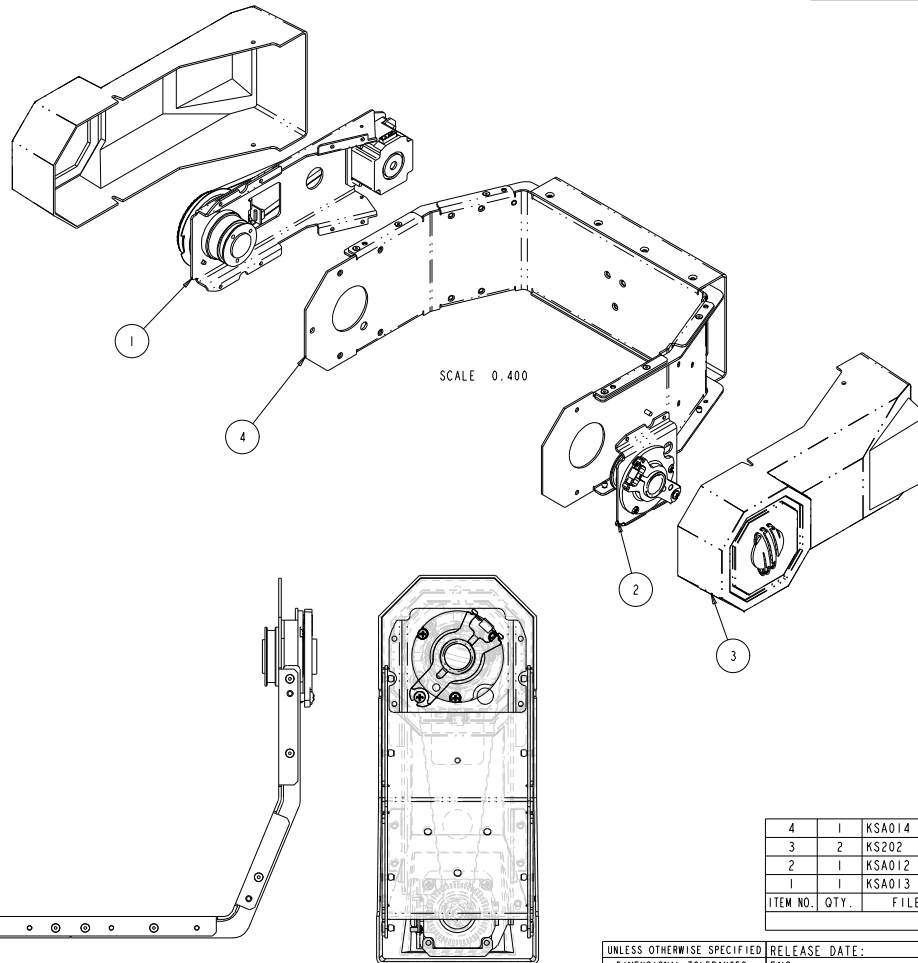




KSA003

REV.	DESCRIPTION	DATE	ENG	ECO #	APPR
1	CREATE DRAWING	18MAR05	LR		



ITEM NO.	QTY.	FILENAME	PART NO.	REV	DESCRIPTION
4	1	KSA014	80071883	-	YOKE, ASSY RIVETED S-CMD
3	2	KS202	99080264	A	COVER, YOKE S-CMD
2	1	KSA012	NA	1	BEARING, ASSY TILT DAMPER SIDE S-CMD
1	1	KSA013	NA	2	BEARING ASSY, TILT, GEAR SIDE, S-CMD

BILL OF MATERIALS

UNLESS OTHERWISE SPECIFIED		RELEASE DATE:	CE:	 High End 2105 GRACY FARMS LANE AUSTIN, TEXAS 78758 (512) 836-2242 FAX (512) 832-4128 http://www.highend.com	 Lightwave RESEARCH
DIMENSIONAL TOLERANCES:		ENG:	QA:		
0 PLACE DECIMAL = ±0.38		ME:			
1 PLACE DECIMAL = ±0.25		MEG:			
2 PLACE DECIMALS = ±0.13					
ANGLES = ±0.5°		DESCRIPTION:		YOKE ASSY, TOP LEVEL S-CMD	
FOR PAINTED PARTS REFER TO		MATERIAL:		FINISH:	
ENG. SPEC. MANUAL WI-0592		TBD			
MIN. DRAFT		INTERPRET DIMENSIONS PER		PART NO.	DRAWING NO.
MIN. RADI		ASME Y14.5M-1994		NA	KSA003
FLATNESS		THIRD ANGLE PROJECTION		REV.	1
THICKNESS		DIMENSIONS ARE IN MILLIMETERS		DO NOT SCALE	SCALE: 0.500
VOLUME				SHEET: 1 OF 1	

PROPRIETARY NOTICE:

THIS DOCUMENT CONTAINS CONFIDENTIAL AND PROPRIETARY INFORMATION OF HIGH END SYSTEMS INC., (ALSO DBA LIGHTWAVE RESEARCH) AND IS GIVEN TO THE RECEIVER IN CONFIDENCE. THE RECEIVER ACCEPTS AND AGREES THAT, EXCEPT AS AUTHORIZED BY HIGH END SYSTEMS, THE RECEIVER WILL NOT PERMIT THE USE OF THE DOCUMENT OR ANY COPY THEREOF ON THE INFORMATION THEREIN. WILL NOT COPY OR PERMIT COPYING THE DOCUMENT WILL NOT DISCLOSE TO OTHERS EITHER THE DOCUMENT OR THE INFORMATION THEREIN, AND WILL UPON COMPLETION OF THE NEED TO RETAIN THE DOCUMENT, OR UPON DEMAND, RETURN THE DOCUMENT WITHOUT RETAINING ANY OF THE INFORMATION CONTAINED THEREIN IN ANY FORM WHATSOEVER.