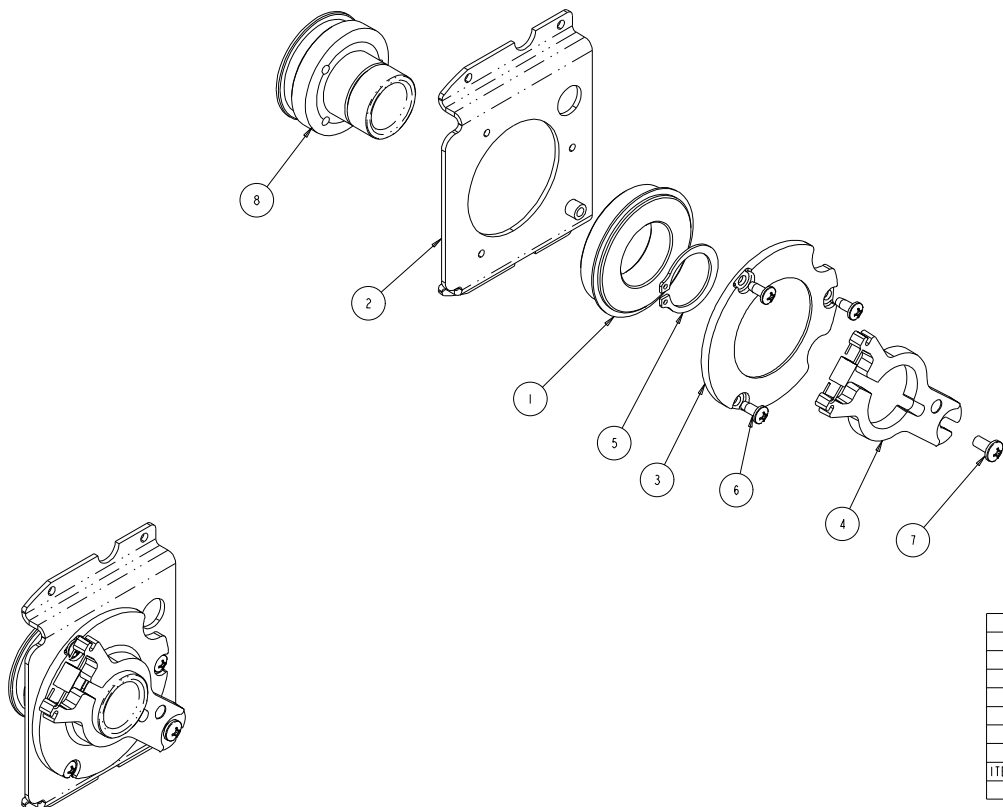


KSA012

REV.	DESCRIPTION	DATE	ENG	ECO #	APPR
1	CREATE DRAWING	18MAR05	LR		



ANCILLARY DRAWING

ITEM NO.	QTY.	FILENAME	PART NO.	REV	DESCRIPTION
8	1	KS301	99140019	-	TUBE, TILT MOTOR BRAKE SIDE, S-CMD
7	1	SCREW10-32PP0380BZ	90709020		SCREW, PHIL PAN 10-32 X 3/8 M/S SBZ
6	3	SCREW8-18PPB380BZ	90709043		SCREW, #8 PHIL PAN 3/8 B TYPE SS B/O
5	1	RING1000EXT	90701071	I	RETAINER, RING ZINC YELLOW (1.00 ID)
4	1	SP144	80140023	-	DAMPER, SHAFT TENSIONER
3	1	SP465	99260447	A	CAP BRG SUPRT 910PPG, DIECAST, MACHINED
2	1	SY154	99260184	A	BRACKET, TILT BEARING MTR BK SIDE S 250
1	1	9106PPG	90719007	I	BEARING, TECH 6006-2RSNR STC
BILL OF MATERIALS					

UNLESS OTHERWISE SPECIFIED		RELEASE DATE:	CE:	2105 GRACY FARMS LANE AUSTIN, TEXAS 78758 (512) 836-2242 FAX (512) 832-4128 http://www.highend.com	
DIMENSIONAL TOLERANCES:		ENG:	QA:		
0 PLACE DECIMAL = ±0.38		ME:			
1 PLACE DECIMAL = ±0.25		MEG:	DRW: LARRY R		
2 PLACE DECIMALS = ±0.13		DESCRIPTION:			
ANGLES = ±0.5°		BEARING, ASSY TILT DAMPER SIDE S-CMD			
FOR PAINTED PARTS REFER TO		MATERIAL:		FINISH:	
ENG. SPEC. MANUAL WI-0592		CHARTED		NA	
MIN. DRAFT		INTERPRET DIMENSIONS PER		PART NO.	DRAWING NO.
MIN. RADII		ASME Y14.5M-1994		NA	KSA012
FLATNESS		THIRD ANGLE PROJECTION		REV.	1
THICKNESS		DIMENSIONS ARE IN MILLIMETERS		DO NOT SCALE	SCALE: 1.000
VOLUME				SHEET: 1 OF 1	

PROPRIETARY NOTICE:
THIS DOCUMENT CONTAINS CONFIDENTIAL AND PROPRIETARY INFORMATION OF HIGH END SYSTEMS INC., (ALSO DBA LIGHTWAVE RESEARCH) AND IS GIVEN TO THE RECEIVER IN CONFIDENCE. THE RECEIVER ACCEPTS AND AGREES THAT, EXCEPT AS AUTHORIZED BY HIGH END SYSTEMS, THE RECEIVER WILL NOT PERMIT THE USE OF THE DOCUMENT OR ANY COPY THEREOF OR THE INFORMATION THEREIN, WILL NOT COPY OR PERMIT COPYING THE DOCUMENT WILL NOT DISCLOSE TO OTHERS EITHER THE DOCUMENT OR THE INFORMATION THEREIN, AND WILL UPON COMPLETION OF THE NEED TO RETAIN THE DOCUMENT, OR UPON DEMAND, RETURN THE DOCUMENT WITHOUT RETAINING ANY OF THE INFORMATION CONTAINED THEREIN IN ANY FORM WHATSOEVER.