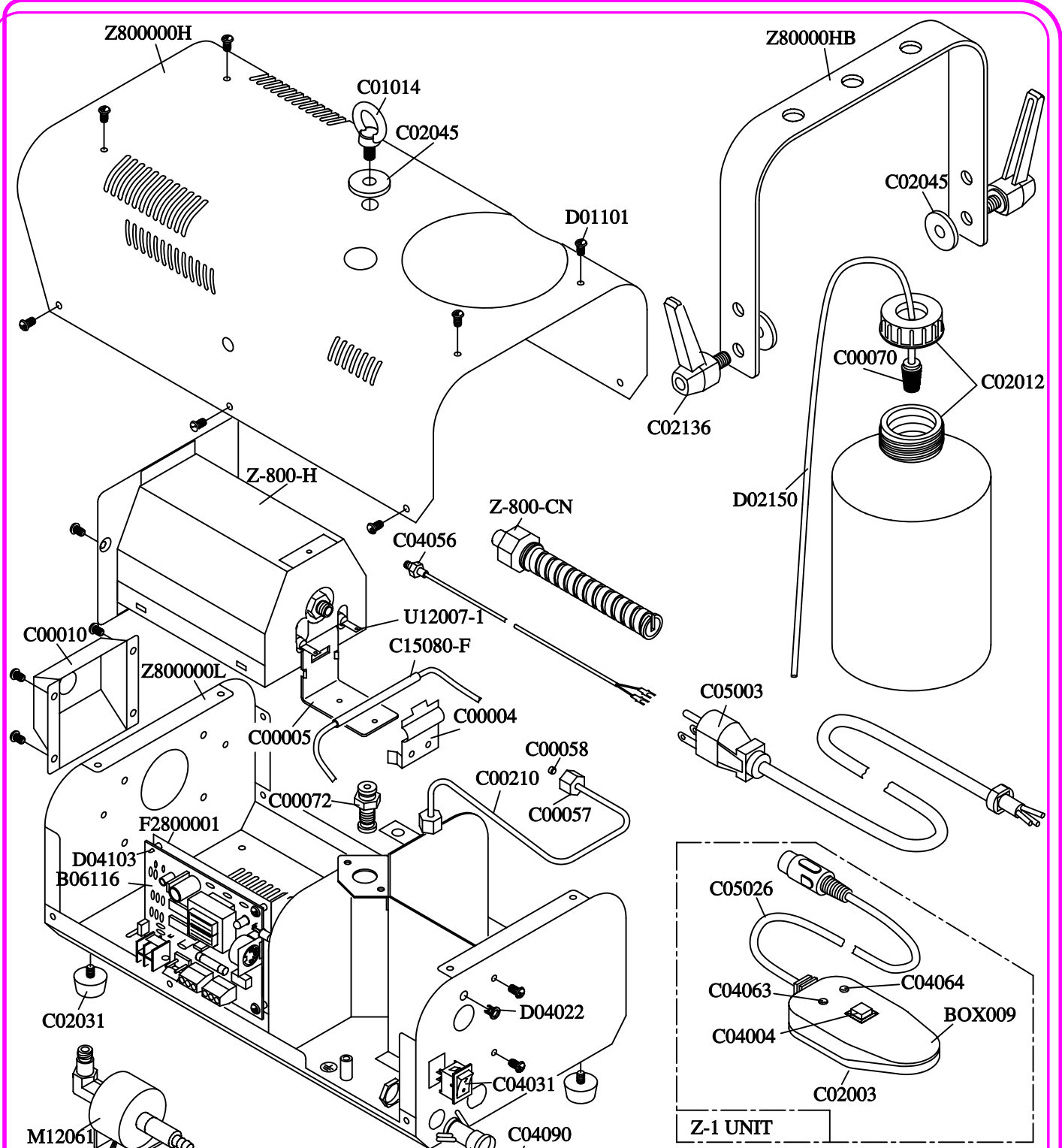


A B C D E

1
2
3
4
5
6
7
8



SPARE PARTS OF Z-800(120V)

- Z800000L Steel Case/Base
- Z800000H Steel Case/Cover
- Z80000HB Yoke
- BOX009 Control Case
- B06116 PC Board
- C00004 Bracket
- C00005 Trestle
- C00010 Nozzle Plate
- C00057 Copper Nut
- C00058 Copper Nut Insert
- C00070 Filter
- C00072 Adaptor With Nut
- C00210 Copper Tube
- C01014 M8 Screw

- C02003 Magnetized Rubber
- C02012 Tank & Tank's Cap
- C02031 Foot
- C02045 Washer
- C02136 Tightening Screw
- C04004 Push Button/Fogging
- C04031 Rocker Switch/Power
- C04056 Temperature Sensor
- C04063 Pilot Lamp/Red
- C04064 Pilot Lamp/Green
- C04090 Fuse (F7A/120V)
- C04630 Fuseholder

- C05003 Cable & Plug
- C05026 Cable For Remote Control
- C15080-F Temperature Fuse
- D01101 M4*8L Screw
- D02150 PU Tube 4mm
- D04022 Ring Bushing
- D04103 P.C.B Fastening Pin
- F2800001 PCB Support Plate
- M12061 Pump
- U12007-1 Heater Element
- Z-1 Unit Wired Remote Control
- Z-800-H Heater (Group)
- Z-800-CN Heater Core