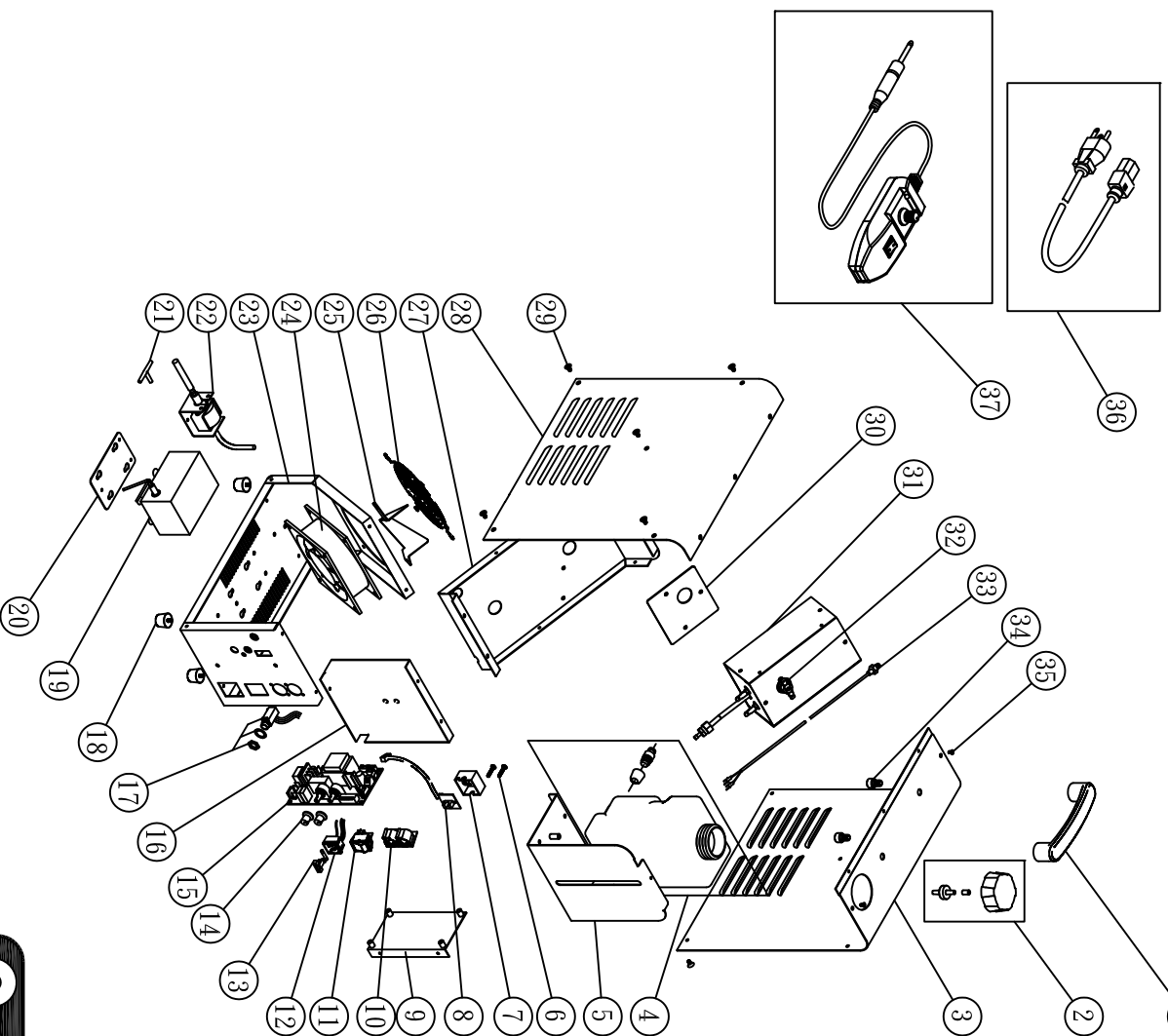


Z-350 (120V)



- | | | |
|---|-------------|------------------------------------|
| ① | C02014300 | Handle |
| ② | Z-350-TKC | Tank's Cap |
| ③ | Z0350RH00 | Side Panel/Right |
| ④ | Z-350-TK | Tank |
| ⑤ | Z03500200 | Rear Housing Base |
| ⑥ | D01013A00 | M3x15L Screw |
| ⑦ | C02005801 | Sensor Plastic Cap |
| ⑧ | Z-350-PCBS | Infrared Ray Liguid Sensor |
| ⑨ | Z03500700 | PC Board |
| ⑩ | Z-350-PCBD3 | Binder |
| ⑪ | C04000100 | P. C Board(DMK)include 3pin Socket |
| ⑫ | C15Z350A0 | Rocker Switch/Power |
| ⑬ | C04119200 | Power Inlet Socket & Fuseholder |
| ⑭ | C04006200 | Fuse 8A |
| ⑮ | Z-350-PCB | VR |
| ⑯ | Z03500300 | P. C Board |
| ⑰ | C045E2000 | Partition Plate |
| ⑱ | C02003500 | Remote Controller Holder |
| ⑲ | Z-350-PA | Foot |
| ⑲ | Z03500400 | Air Pump |
| ⑲ | C02030200 | Steel Base |
| ⑲ | Z-350-P | Air Connection |
| ⑲ | Z03500100 | Pump (Group) |
| ⑲ | C042031A0 | Steel Case/Back Base |
| ⑲ | Z03500600 | Fan |
| ⑲ | C04205200 | Air Flow Converter |
| ⑲ | Z03500100 | Guardrail |
| ⑲ | Z03501H00 | Fant Housing Base |
| ⑲ | D01068000 | Side Panel/Left |
| ⑲ | Z03500500 | M4x6L Screw |
| ⑲ | Z-350-H | Heater Base Plate |
| ⑲ | C04107100 | Heater Group |
| ⑲ | C045E0610 | Thermostat |
| ⑲ | C01013000 | Thermostat Sensor |
| ⑲ | D01030B00 | M8x12L Screw |
| ⑲ | C050116A0 | M3x6L Screw(Sliver) |
| ⑲ | Z-3 Unit | Cable & Plug |
| ⑲ | | Wired Remote Controller |

Weight: 8.82kg

Antari
FOG MACHINE

Antari Lighting And Effects Ltd.
育安照明企业股份有限公司

Dwg No. Z-350-20121203(120V) By Tom