



Service Bulletin

Subject: Removing Current Sensor

Product Line: Studio Command

Date: 11/15/06

Before removing the current sensor from a Studio Command fixture, please note the following:

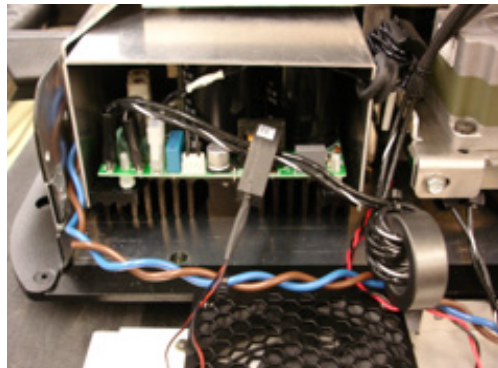
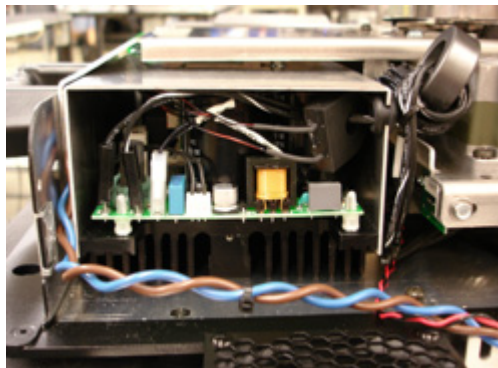


Warnings: Disconnect power before servicing.

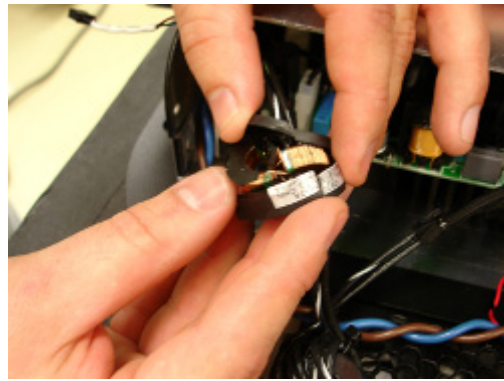
Equipment surfaces may reach temperatures up to 130° C (266° F). Allow the fixture to cool before handling.

To access and remove the current sensor:

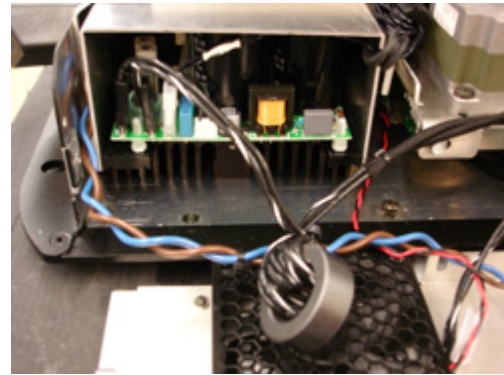
1. Remove Studio Command 1200 Top Box covers, then remove side panel and reveal 90409248 harness connected within the power supply.
2. Pull harness out of the power supply and position current sensor component approximately halfway between the ferrite and where the harness connectors are plugged into the power supply.
3. Position cutting tool so that it grips the transformer component firmly and then cut the component carefully making sure not to cut the wires. Considerable pressure will need to be applied.



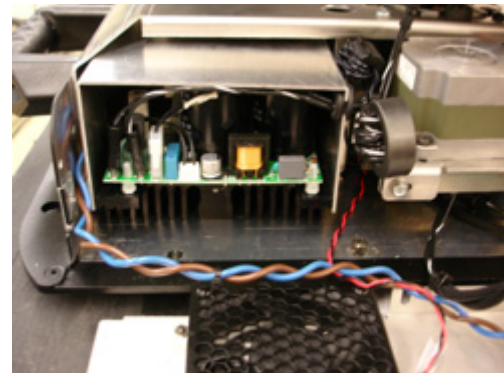
4. The component will shatter and then the entire current sensor can be removed.



5. After removing all debris from the broken current sensor, the harness should look like this.



6. Place the harness back into its former position making sure to put the ferrite back between the power supply cover and the stepper motor. Also verify that harness connectors have not come loose in the power supply.



7. Replace side panel and then replace top box covers.

If you experience any complications or have any questions regarding these installations, contact the High End Systems Service Hotline at 1.800.890.8989 to speak with a technician.