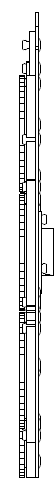
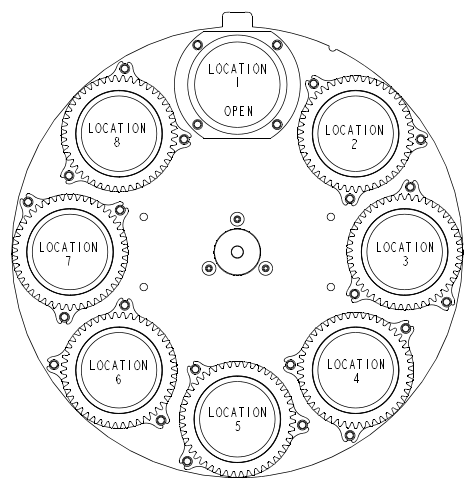
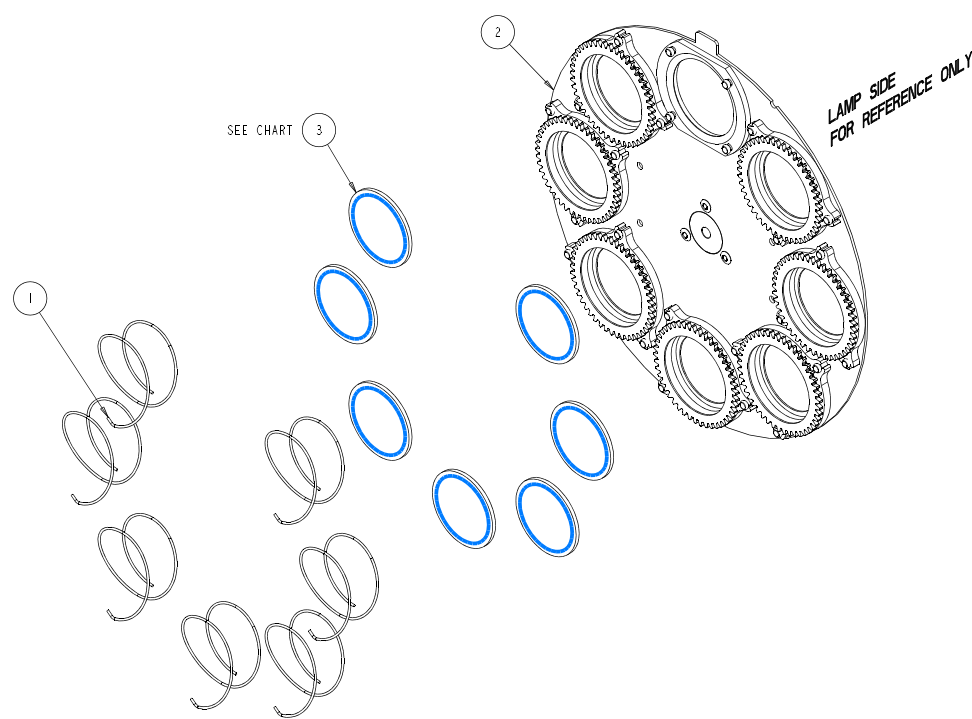


REV.	DESCRIPTION	DATE	ENG	ECO #	APPR
-	RELEASED FOR PRODUCTION				



LITHO PLACEMENT: COATED SIDE IS NEAR SIDE IN THIS VIEW

LITHO GLASS LOADING		
LOCATION	PART NUMBER	DESCRIPTION
1	NA	OPEN
2	39141269	LITHO, FRACTURE
3	39141394	LITHO, POLYMEOMA
4	39141393	LITHO, DENSE FOILAGE
5	39141404	LITHO, GATLIN GUN
6	39141010	LITHO, FLUFFY CLOUD
7	39141405	LITHO, IRREGULAR CRATERS
8	39141244	LITHO, VALIANT



ITEM NO.	QTY.	FILENAME	PART NO.	DESCRIPTION
3	7	--	CHARTED	LITHO GLASS, SEE CHART
2	1	FSA054	80200030	WHEEL, ASSY ROTATING LITHO
1	7	TB262	90701108	SPRING, GLASS HOLDER EFFECTS WHEEL

BILL OF MATERIALS

UNLESS OTHERWISE SPECIFIED	RELEASE DATE: 29APR01	CE:	High End	2209 WEST BRANER LANE AUSTIN, TEXAS 78758	
DIMENSIONAL TOLERANCES:	ENG: D FRANKLIN	QA:		(512) 832-0363	
0 PLACE DECIMAL = ±0.38	ME:			FAX (512) 832-8542	
1 PLACE DECIMAL = ±0.25	MFG:	DRW: L ROESSLER		***** http://www.highend.com	
2 PLACE DECIMALS = ±0.13					
ANGLES = ±0.5°					
FOR PAINTED PARTS REFER TO ENS. SPEC. MANUAL SOP-4.4.2	DESCRIPTION: WHEEL, ASSY ROTATING LITHO W/GLASS X-SPOT				
MIN. DRAFT	MATERIAL: CHARTED			FINISH: NA	
MIN. RADI	INTERPRET DIMENSIONS PER ASME Y14.5M-1994	SI	PART NO. 80200035	DRAWING NO. FSA055	REV. -
FLATNESS	THIRD ANGLE PROJECTION	METRIC	DO NOT SCALE	SCALE: 1,000	SHEET: 1 OF 1
THICKNESS	DIMENSIONS ARE IN MILLIMETERS	A1			
VOLUME					

PROPRIETARY NOTICE:
THIS DOCUMENT CONTAINS CONFIDENTIAL AND PROPRIETARY INFORMATION OF HIGH END SYSTEMS INC., (ALSO DBA LIGHTWAVE RESEARCH) AND IS GIVEN TO THE RECEIVER IN CONFIDENCE. THE RECEIVER ACCEPTS AND AGREES THAT, EXCEPT AS AUTHORIZED BY HIGH END SYSTEMS, THE RECEIVER WILL NOT PERMIT THE USE OF THE DOCUMENT OR ANY COPY THEREOF OR THE INFORMATION THEREIN, WILL NOT COPY OR PERMIT COPYING THE DOCUMENT WILL NOT DISCLOSE TO OTHERS EITHER THE DOCUMENT OR THE INFORMATION THEREIN, AND WILL UPON COMPLETION OF THE NEED TO RETAIN THE DOCUMENT, UPON DEMAND, RETURN THE DOCUMENT WITHOUT RETAINING ANY OF THE INFORMATION CONTAINED THEREIN IN ANY FORM WHATSOEVER.