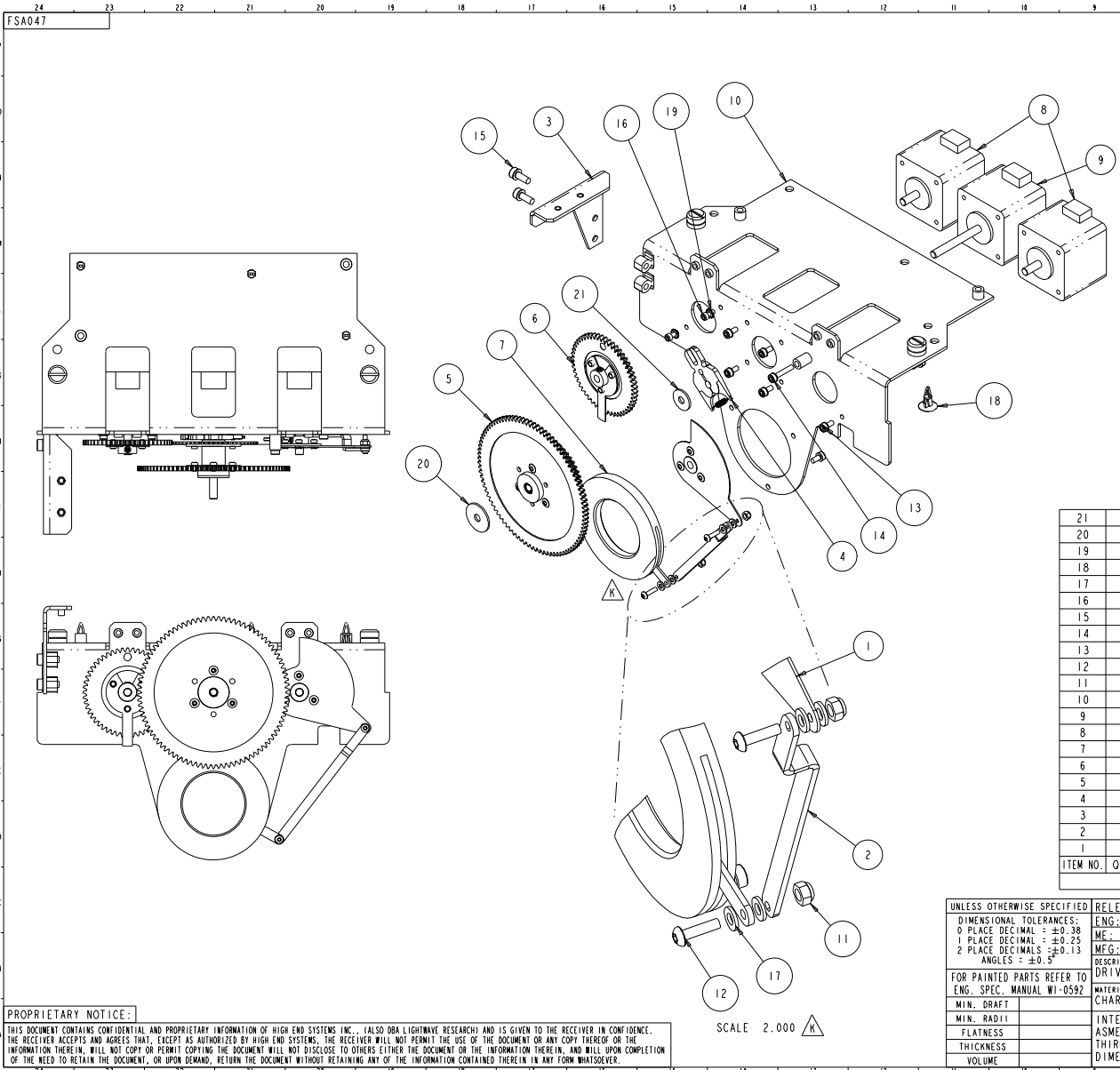


PRODUCTION PRINT

High End Systems

11/22/2004

Issued By: Lee Fredrickson



REV.	DESCRIPTION	DATE	ENG	ECO #	APPR
D	IRIS WAS: 99290024; NOW: 99290026 (NEW IRIS HAS NEW LEAF MAT'L)	15JAN02	LR	#879	DF
E	RESTRUCTURE SYTELIN BOM SHOWING PIECE PARTS REPLACED W/ SUBS ;;ADD REV COLUMN IN BOM	04NOV02	LR	#1135	DF
F	CHANGE MOTORS TO SMC0 MOON MOTORS: 99270048 (MR100_06) NOW: 99270057 (MR102_05) 99270045 (MR100_02) NOW: 99270054 (MR102_02)	20JAN03	LR	#1161	KC
G	DELETE IRIS LINKAGE (90701276) & PUSHON RETAINER (90701298);;ADD IRIS ARM (99290028) + HARDWARE;; ADD DETAIL VIEW SHOWING ASSY OF ARM	23APR03	LR	#1240	DF
H	CHANGE MOTORS TO NMB ALINCO MOTORS: 99270057 (MR102_05) NOW: 99270078 (MR108_04) 99270054 (MR102_02) NOW: 99270076 (MR108_02)	03DEC03	LR	#1396	DF
J	SCREW WAS: 91010210 BZ NYTEMP; NOW: 91112510 SS	22DEC03	LR	#1440	DF
K	CORRECT STACKUP OF SHIMS/IRIS IN EXPLODED VIEW;; REPOSITION IRIS TO BE IN FRONT OF LINK	22NOV04	LR	#1609	DF

- NOTES:
- PARTS TO BE FREE OF BURRS AND/OR SHARP EDGES
 - ORIENT MOTORS AS SHOWN BEFORE SECURING.

ITEM NO.	QTY.	FILENAME	PART NO.	REV	DESCRIPTION
21	1	SPI32	90706083	A	WASHER, THRUST, OPTICAL MODULE ASSY
20	1	FS221	90706124	-	WASHER, THRUST, 5.2 X 20.0 X 1.27
19	2	WASHER4LET	90706126	-	WASHER, EXTERNAL TOOTH LOCK #4 S ZP
18	3	SUPPORT_CRLCBSRE_4_01	90702207	-	STANDOFF, PCB NYLON .250
17	4	SHIM3X6X0-8MM.BRASS	90702213	-	SHIM, LAMINATED BRASS 3MM X 6MM X 0.8
16	2	SCREW4-40AC250SS	90707121	-	SCREW, SOCKET CAP 4-40 X 1/4 LG SS
15	2	SCREW4M4AC10BZ	91000410	-	SCREW, M4 SOCKET CAP 10 BZ SEMS
14	1	SCREW3M3AC16BZ	91000316	-	SCREW, M3 SOCKET CAP 16 BZ SEMS
13	8	SCREW3M3AC06BZ	91000306	-	SCREW, M3 SOCKET CAP 06 BZ SEMS
12	2	SCREW2-5AB10SS	91112510	-	SCREW, M2.5 BUTTON 10 SS
11	2	NUT_M2-5_LOCK	90703091	-	NUT, LOCK M2.5 NYLON INSERT
10	1	FS151	99260357	E	MOUNT, LITHO WHEEL / IRIS
9	1	MR108_04	99270078	-	MOTOR, STEP 2PH MET S17 43.5mm ALNICO NMB
8	2	MR108_02	99270076	-	MOTOR, STEP 2PH MET S17 15.1mm ALNICO NMB
7	1	FSS40	99290026	-	IRIS, 40mm, X-SPOT
6	1	FSA059	99430068	-	GEAR, ASSY LITHO SENSOR STRAIGHT ARM
5	1	FSA062	99430071	-	GEAR, ASSY DRIVE 52/90 TOOTH LITHO
4	1	SP093	80140026	A	DAMPER, MOTOR BRAKE ARAMID ASSY.
3	1	FS161	99260353	A	BRACKET, SENSOR MOUNT LITHO WHEEL
2	1	FS116	99290028	-	ARM, CONTROL, IRIS
1	1	FSA057	99290025	-	ARM, ASSY IRIS ACTUATOR X-SPOT

UNLESS OTHERWISE SPECIFIED: RELEASE DATE: JAN 26, 2001 CE: -
 DIMENSIONAL TOLERANCES: ENG: D. FRANKLIN OA: -
 0 PLACE DECIMAL = ±0.38 ME: -
 1 PLACE DECIMAL = ±0.25 MEG: -
 2 PLACE DECIMALS = ±0.13 DRW: L ROESSLER
 ANGLES = ±0.5°

FOR PAINTED PARTS REFER TO ENG. SPEC. MANUAL WI-0592

DESCRIPTION: DRIVE, ASSY LITHO / IRIS X-SPOT TURNKEY

MATERIAL: CHARTED FINISH: NA

MIN. DRAFT INTERPRET DIMENSIONS PER SI METRIC A1 PART NO. 80200037 DRAWING NO. FSA047 REV. K
 FLATNESS ASME Y14.5M-1994
 THICKNESS THIRD ANGLE PROJECTION
 VOLUME DIMENSIONS ARE IN MILLIMETERS

High End 2105 GRACY FARMS LANE AUSTIN, TEXAS 78758 (512) 836-2242 FAX (512) 832-4128 http://www.highend.com LIGHTWAVE RESEARCH

DO NOT SCALE SCALE: 0.750 SHEET: 1 OF 1

PROPRIETARY NOTICE:
 THIS DOCUMENT CONTAINS CONFIDENTIAL AND PROPRIETARY INFORMATION OF HIGH END SYSTEMS INC., (ALSO DBA LIGHTWAVE RESEARCH) AND IS GIVEN TO THE RECEIVER IN CONFIDENCE. THE RECEIVER ACCEPTS AND AGREES THAT, EXCEPT AS AUTHORIZED BY HIGH END SYSTEMS, THE RECEIVER WILL NOT PERMIT THE USE OF THE DOCUMENT OR ANY COPY THEREOF OR THE INFORMATION THEREIN, WILL NOT COPY OR PERMIT COPYING THE DOCUMENT WILL NOT DISCLOSE TO OTHERS EITHER THE DOCUMENT OR THE INFORMATION THEREIN, AND WILL UPON COMPLETION OF THE NEED TO RETAIN THE DOCUMENT, OR UPON DEMAND, RETURN THE DOCUMENT WITHOUT RETAINING ANY OF THE INFORMATION CONTAINED THEREIN IN ANY FORM WHATSOEVER.