

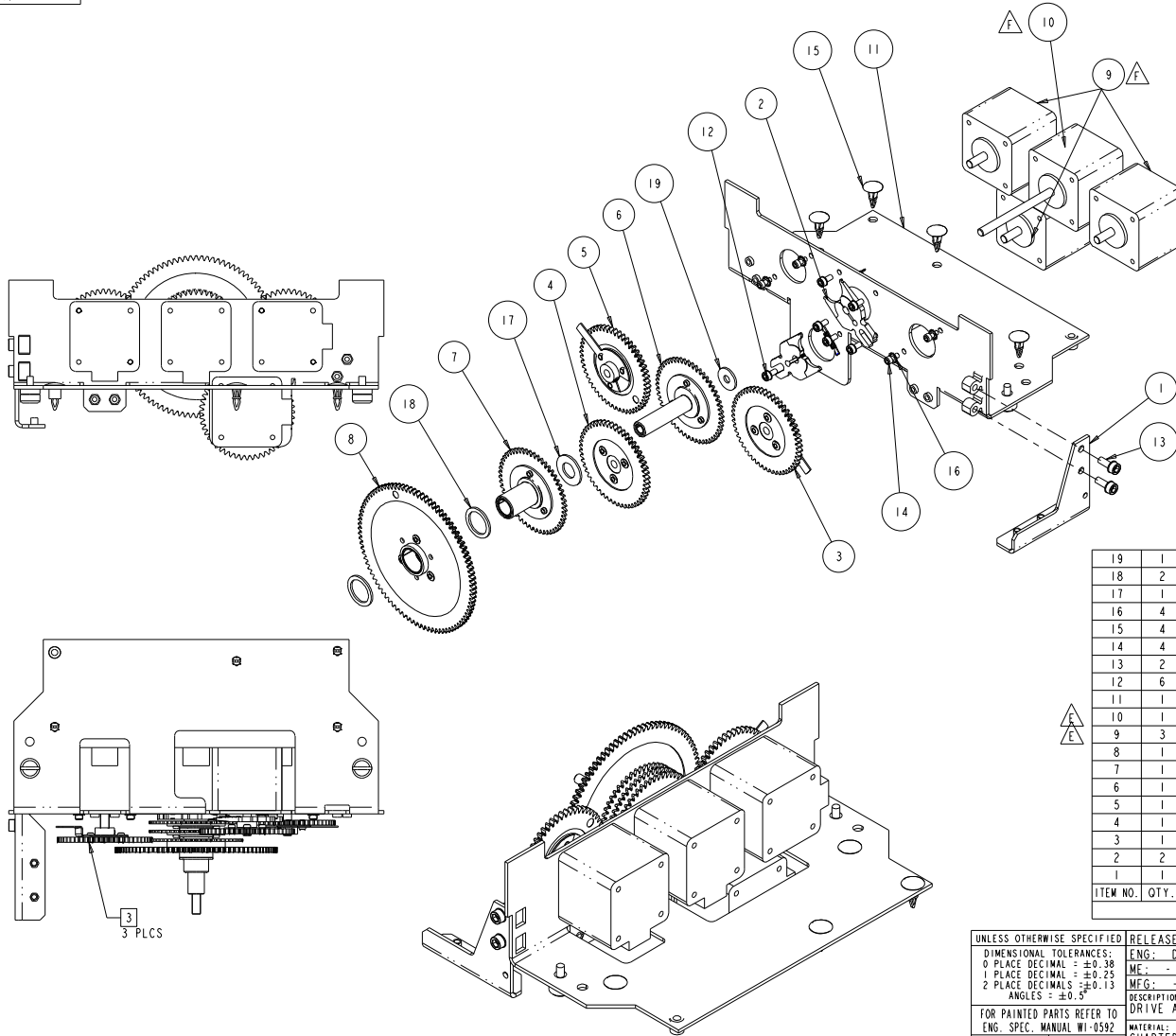
PRODUCTION PRINT

High End Systems

12/15/2003

By: Lee Fredrickson

FSA046



REV.	DESCRIPTION	DATE	ENG	ECO #	APPR
-	RELEASED FOR PRODUCTION				
A	REPL OUTDRIVE METRIC MTRS;CHG HARDWARE	01MAY01	LR	#621	RV
B	CHG BRACKETS TO 'UNPAINTED' CHG SYMIX #	31MAY01	LR	#735	RV
C	99270048 WAS 99270041; 99270045 WAS 99270037	27AUG01	TAM	#799	KB
D	RESTRUCTURE SYTELIN BOM SHOWING PIECE PARTS REPLACED W/ SUBS ;:ADD REV COLUMN IN BOM	04NOV02	LR	#1135	DF
E	CHANGE MOTORS TO SMCO MOON MOTORS: 99270048 (MR100.06) NOW: 99270060 (MR102.08) 99270045 (MR100.02) NOW: 99270054 (MR102.02)	20JAN03	LR	#1161	KC
F	CHANGE MOTORS TO NMB ALNICO MOTORS: 99270060 (MR102.08) NOW: 99270080 (MR108.06) 99270054 (MR102.02) NOW: 99270076 (MR108.02)	03DEC03	LR	#1396	DP

- NOTES:
- PARTS TO BE FREE OF BURRS AND/OR SHARP EDGES.
 - NOTE POSITION OF MOTORS BEFORE SECURING TO PLATE.
 - CENTER THE DRIVE GEAR WITH DRIVEN GEAR BEFORE TIGHTENING SET SCREW ON HUB. 3 PLCS.

ITEM NO.	QTY.	FILENAME	PART NO.	REV	DESCRIPTION
19	1	SPI32	90706083	A	WASHER, THRUST, OPTICAL MODULE ASSY
18	2	FS223	90706123	-	WASHER, THRUST, 15.2 X 20.0 X 1.27MM
17	1	FS222	90706122	-	WASHER, THRUST, 10.2 X 20.0 X 1.27MM
16	4	WASHER4LET	90706126	-	WASHER, EXTERNAL TOOTH LOCK #4 S ZP
15	4	SUPPORT_CRLCBSRE_4_01	90702207	-	STANDOFF, PCB NYLON .250
14	4	SCREW4-40AC250SS	90707121	-	SCREW, SOCKET CAP 4-40 X 1/4 LG SS
13	2	SCREWM4AC10BZ	91000410	-	SCREW, M4 SOCKET CAP 10 BZ SEMS
12	6	SCREWM3AC6BZ	91000306	-	SCREW, M3 SOCKET CAP 06 BZ SEMS
11	1	FS153	99260356	E	MOUNT, EFFECTS WHEELS
10	1	MR108_06	99270080	-	MOTOR, STEP 2PH MET S17 62.5mm ALNICO NMB
9	3	MR108_02	99270076	-	MOTOR, STEP 2PH MET S17 15.1mm ALNICO NMB
8	1	FSA070	99430070	-	GEAR, ASSY QUADAX #3
7	1	FSA069	99430077	A	GEAR, ASSY QUADAX #2
6	1	FSA068	99430075	-	GEAR, ASSY QUADAX #1
5	1	FSA059	99430068	-	GEAR, ASSY LITHO SENSOR STRAIGHT ARM
4	1	FSA058	99430067	-	GEAR, ASSY DRIVE 52 TOOTH OVERMOLD
3	1	FSA060	99430069	-	GEAR, ASSY 54 TOOTH W/OFFSET TAB
2	2	SPO93	80140026	A	DAMPER, MOTOR BRAKE ARAMID ASSY.
1	1	FS161	99260353	A	BRACKET, SENSOR MOUNT LITHO WHEEL

UNLESS OTHERWISE SPECIFIED: RELEASE DATE: 08JAN01 CE: -
 ENG: D FRANKLIN OA: -
 ME: -
 MEG: -
 DRW: L ROESSLER

High End 2209 WEST BRAKER LANE
 AUSTIN, TEXAS 78758
 (512) 832-0363
 FAK (512) 832-8542
 http://www.highend.com

Lightwave RESEARCH

FOR PAINTED PARTS REFER TO ENG. SPEC. MANUAL WI-0592
 MATERIAL: CHARTED
 FINISH: NA

SCALE: 0.880

INTERPRET DIMENSIONS PER ASME Y14.5M-1994
 THIRD ANGLE PROJECTION
 DIMENSIONS ARE IN MILLIMETERS

SI METRIC A1

PART NO. 80460001
 DRAWING NO. FSA046
 REV. F

DO NOT SCALE SCALE: 0.750 SHEET: 1 OF 1

PROPRIETARY NOTICE:
 THIS DOCUMENT CONTAINS CONFIDENTIAL AND PROPRIETARY INFORMATION OF HIGH END SYSTEMS INC., (ALSO DBA LIGHTWAVE RESEARCH) AND IS GIVEN TO THE RECEIVER IN CONFIDENCE. THE RECEIVER ACCEPTS AND AGREES THAT, EXCEPT AS AUTHORIZED BY HIGH END SYSTEMS, THE RECEIVER WILL NOT PERMIT THE USE OF THE DOCUMENT OR ANY COPY THEREOF OR THE INFORMATION THEREIN, WILL NOT COPY OR PERMIT COPYING THE DOCUMENT OR THE INFORMATION THEREIN, AND WILL UPON COMPLETION OF THE NEED TO RETAIN THE DOCUMENT, OR UPON DEMAND, RETURN THE DOCUMENT WITHOUT RETAINING ANY OF THE INFORMATION CONTAINED THEREIN IN ANY FORM WHATSOEVER.