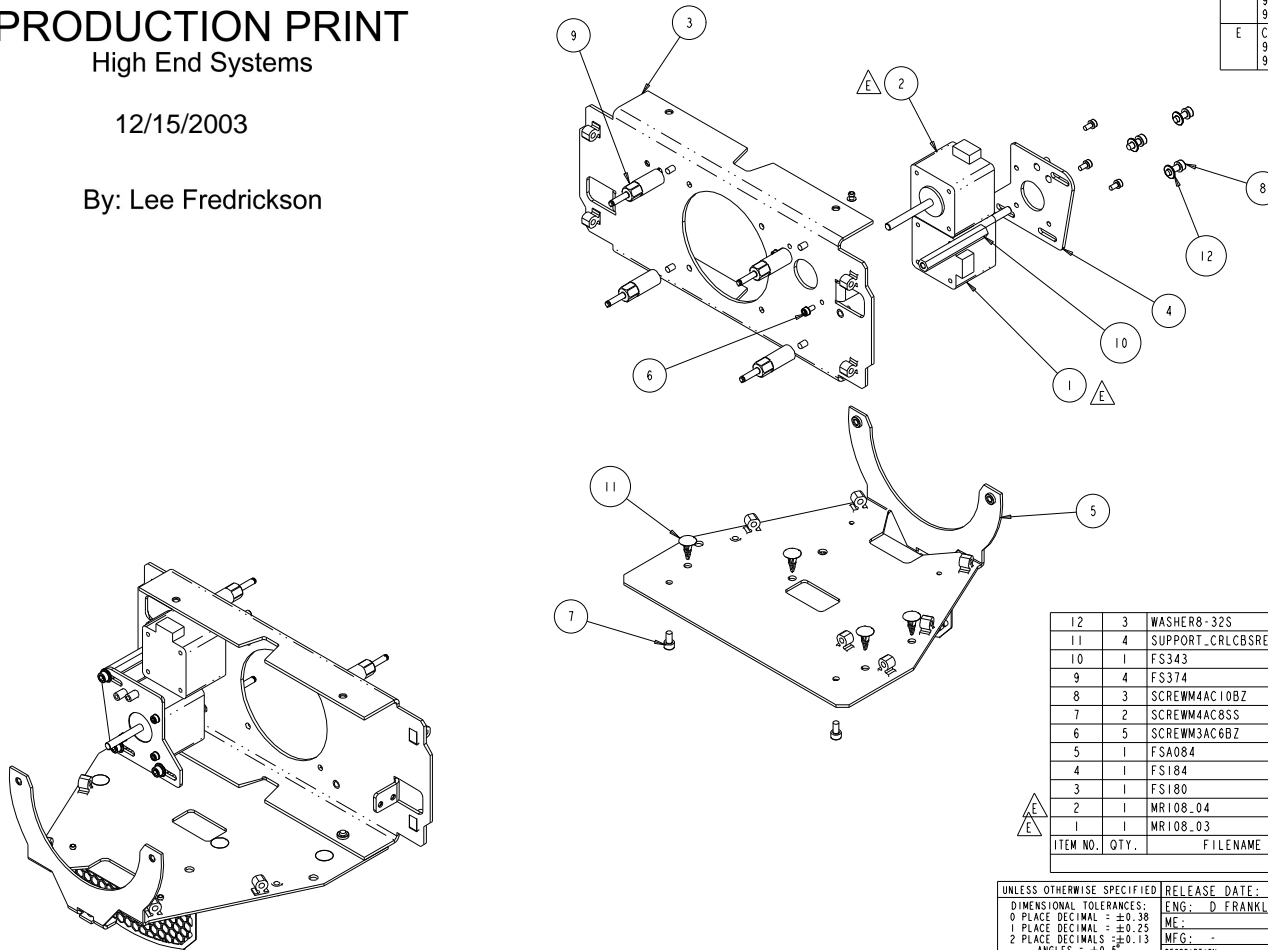


PRODUCTION PRINT

High End Systems

12/15/2003

By: Lee Fredrickson



REV.	DESCRIPTION	DATE	ENG	ECO #	APPR
-	RELEASED FOR PRODUCTION				
A	99270046 WAS 99270043	08/30/01	TAM	#799	KB
B	CHG FROM PAINTED TO UNPAINTED MTG PLATE	15JAN02	LR	#751	DF
C	PIECE PART CHANGES (FS180) ADVANCE REV ON BOM	09JUL02	LR	#1039	DF
D	CHANGE OUT MOTORS TO SMCO MOON MOTORS: 99270046 (MR101_07) NOW: 99270057 (MR102_05) 99270038 (MR100_03) NOW: 99270056 (MR102_04)	20JAN03	LR	#1161	KC
E	CHANGE OUT MOTORS TO NMB ALNICO MOTORS: 99270057 (MR102_05) NOW: 99270078 (MR108_04) 99270056 (MR102_04) NOW: 99270077 (MR108_03)	03DEC03	LR	#1396	DP

NOTES:

- PARTS TO BE FREE OF BURRS AND/OR SHARP EDGES PRIOR TO ASSEMBLY

ITEM NO.	QTY.	FILENAME	PART NO.	REV.	DESCRIPTION
12	3	WASHER8-32S	90706009		WASHER, #8 FLAT SS .174 X .375 X .032
11	4	SUPPORT_CRLCBSRE_4.01	90702207		STANDOFF, PCB NYLON .250
10	1	FS343	90702201	-	STANDOFF, HEX ZOOM MOTOR MOUNT
9	4	FS374	99260361	A	SHAFT, FROST AXLE
8	3	SCREW44C10BZ	91000410		SCREW, M4 SOCKET CAP 10 BZ SEMS
7	2	SCREW44C8SS	91000408		SCREW, M4 SOCKET CAP 08 SS
6	5	SCREW34C6BZ	91000306		SCREW, M3 SOCKET CAP 06 BZ SEMS
5	1	FSA084	80071638	A	SCREEN, ASSY, INLET HEAD LOWER
4	1	FS184	99080136	-	PLATE, MOTOR MOUNT ZOOM CONTROL
3	1	FS180	99260358	B	MOUNT, LENS / FROST ASSY
2	1	MR108_04	99270078	-	MOTOR, STEP 2PH MET S17 43.5mm ALNICO NMB
1	1	MR108_03	99270077	-	MOTOR, STEP 2PH MET S17 33.8mm ALNICO NMB

BILL OF MATERIALS

UNLESS OTHERWISE SPECIFIED	RELEASE DATE: 29APR01	CE:	High End	2209 WEST BRAKER LANE AUSTIN, TEXAS 78758	
DIMENSIONAL TOLERANCES: 0 PLACE DECIMAL = ±0.38 1 PLACE DECIMAL = ±0.25 2 PLACE DECIMALS = ±0.13 ANGLES = ±0.5°	ENG: D FRANKLIN	OA:	MEG:	(512) 832-0363 FAK (512) 832-8542 ***** http://www.highend.com	
FOR PAINTED PARTS REFER TO ENG. SPEC. MANUAL WI-0592	MATERIAL: CHARTED	FINISH: NA	DRW: L ROESSLER	DESCRIPTION: FROST, ASSY MECHANICAL MOUNT X-SPOT	
MIN. DRAFT	MIN. RADII	FLATNESS	THICKNESS	VOLUME	INTERPRET DIMENSIONS PER ASME Y14.5M-1994 THIRD ANGLE PROJECTION DIMENSIONS ARE IN MILLIMETERS
PART NO. 80560031		DRAWING NO. FSA080		REV. E	DO NOT SCALE SCALE: 0.630 SHEET: 1 OF 1

PROPRIETARY NOTICE:
 THIS DOCUMENT CONTAINS CONFIDENTIAL AND PROPRIETARY INFORMATION OF HIGH END SYSTEMS INC., (ALSO DBA LIGHTWAVE RESEARCH) AND IS GIVEN TO THE RECEIVER IN CONFIDENCE. THE RECEIVER ACCEPTS AND AGREES THAT, EXCEPT AS AUTHORIZED BY HIGH END SYSTEMS, THE RECEIVER WILL NOT PERMIT THE USE OF THE DOCUMENT OR ANY COPY THEREOF OR THE INFORMATION THEREIN, WILL NOT COPY OR PERMIT COPYING THE DOCUMENT WILL NOT DISCLOSE TO OTHERS EITHER THE DOCUMENT OR THE INFORMATION THEREIN, AND WILL UPON COMPLETION OF THE NEED TO RETAIN THE DOCUMENT, OR UPON DEMAND, RETURN THE DOCUMENT WITHOUT RETAINING ANY OF THE INFORMATION CONTAINED THEREIN IN ANY FORM WHATSOEVER.