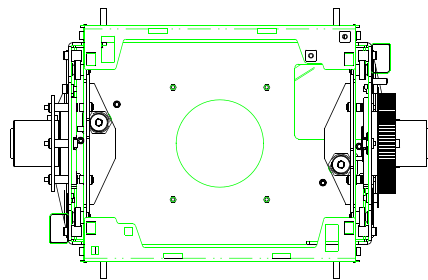
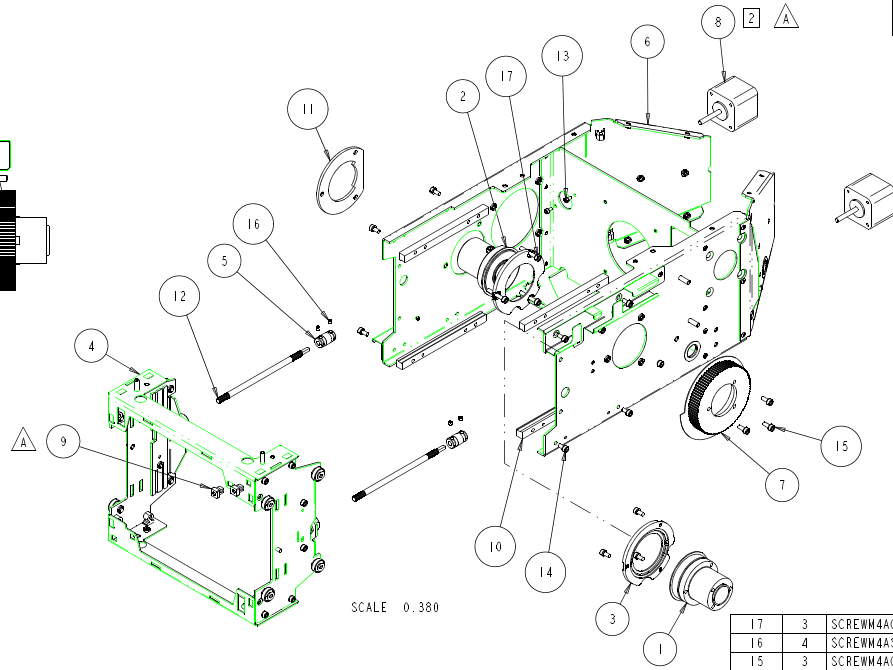


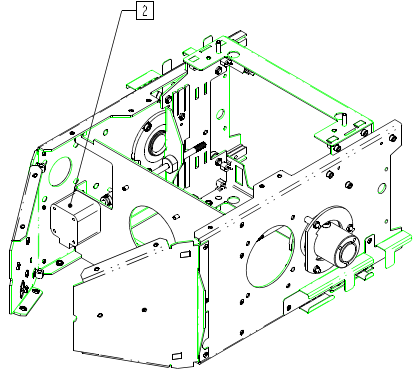
REV.	DESCRIPTION	DATE	ENG	ECO #	APPR
-	RELEASED FOR PRODUCTION				
A	ADD SO GROMMET (2X); ADD ORIENT NOTE	30MAY01	LR	#729	RV



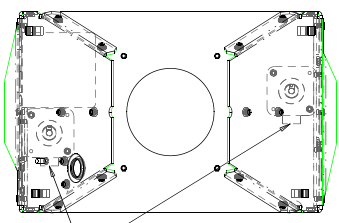
VIEW FROM FRONT



SCALE 0.380



SCALE 0.380



VIEW FROM REAR

NOTES:
 1. PARTS TO BE FREE OF BURRS AND/OR SHARP EDGES PRIOR TO ASSEMBLY
 2. NOTE ORIENTATION OF MOTORS

ITEM NO.	QTY.	FILENAME	PART NO.	DESCRIPTION
17	3	SCREWM4C25BZ	91000425	SCREW, M4 SOCKET CAP 25 BZ SENS
16	4	SCREWM4A54BZ	91030404	SCREW, M4 SOCKET SET 04 BZ NYTEMP
15	3	SCREWM4AC10BZ	91000410	SCREW, M4 SOCKET CAP 10 BZ SENS
14	14	SCREWM4AC8SS	91100408	SCREW, M4 SOCKET CAP 08 SS SENS
13	4	SCREWM3AC6BZ	91000306	SCREW, M3 SOCKET CAP 06 BZ SENS
12	2	FS378	90721012	SCREW, DRIVE 4 START .250 DIA X-SPOT
11	1	FS126	90701285	RING, TILT STOP X-SPOT
10	4	FS302	85000224	RAIL, LINEAR SUPPORT
9	2	NUT225-255_187GROMMET_SO_NY	90703088	NUT, NYLON GROMMET .225/.255 X .187 HGT
8	2	MR100_03	99270038	MOTOR, SIZE 17 STEPPER, METRIC, 33.8mm SHAFT
7	1	FS510	99430062	GEAR, ASSY 90T TILT DRIVE W/FLANGE X-SPOT
6	1	FSA075	80071618	FRAME ASSY, X-SPOT PAINTED
5	2	FS501	90701283	COUPLER, BONDED RUBBER 22.36 LG, M4 THD
4	1	FSA076	80130020	CARRIAGE, ASSY HEAD X-SPOT
3	2	SP460	99260260	CAP BEARING SUPPORT 910PPG, DIECAST
2	1	FSA074	90719048	BEARING, ASSY TILT TUBE PRESSING, HARNESS SIDE
1	1	FSA073	90719047	BEARING, ASSY TILT TUBE PRESSING, DRIVE SIDE
BILL OF MATERIALS				

UNLESS OTHERWISE SPECIFIED	RELEASE DATE:	CE:	2209 WEST BRANER LANE AUSTIN, TEXAS 78758 (512) 832-0363 FAX (512) 832-8542 http://www.highend.com	LIGHTWAVE RESEARCH
DIMENSIONAL TOLERANCES:	ENG:	QA:		
0 PLACE DECIMAL = ±0.38	ME:	DRW: L ROESSLER		
1 PLACE DECIMAL = ±0.25	MFG:			
2 PLACE DECIMALS = ±0.13	ANGLES = ±0.5°	DESCRIPTION:	FRAME, TILT BRG ASSY X-SPOT	
FOR PAINTED PARTS REFER TO ENG. SPEC. MANUAL W1-0592	MATERIAL:	FINISH:	NA	
MIN. DRAFT	CHARTED			
MIN. RADIUS	INTERPRET DIMENSIONS PER ASME Y14.5M-1994	SI METRIC A1	PART NO. 99020074	DRAWING NO. FSA026
FLATNESS	THIRD ANGLE PROJECTION		DO NOT SCALE	SCALE: 0.500
THICKNESS	DIMENSIONS ARE IN MILLIMETERS			SHEET: 1 OF 1
VOLUME				REV. A

PROPRIETARY NOTICE:
 THIS DOCUMENT CONTAINS CONFIDENTIAL AND PROPRIETARY INFORMATION OF HIGH END SYSTEMS, INC., (ALSO DBA LIGHTWAVE RESEARCH) AND IS GIVEN TO THE RECEIVER IN CONFIDENCE. THE RECEIVER ACCEPTS AND AGREES THAT, EXCEPT AS AUTHORIZED BY HIGH END SYSTEMS, THE RECEIVER WILL NOT PERMIT THE USE OF THE DOCUMENT OR ANY COPY THEREOF OR THE INFORMATION THEREIN, WILL NOT COPY OR PERMIT COPYING THE DOCUMENT WILL NOT DISCLOSE TO OTHERS EITHER THE DOCUMENT OR THE INFORMATION THEREIN, AND WILL UPON COMPLETION OF THE NEED TO RETURN THE DOCUMENT, OR UPON DEMAND, RETURN THE DOCUMENT WITHOUT RETAINING ANY OF THE INFORMATION CONTAINED THEREIN IN ANY FORM WHATSOEVER.