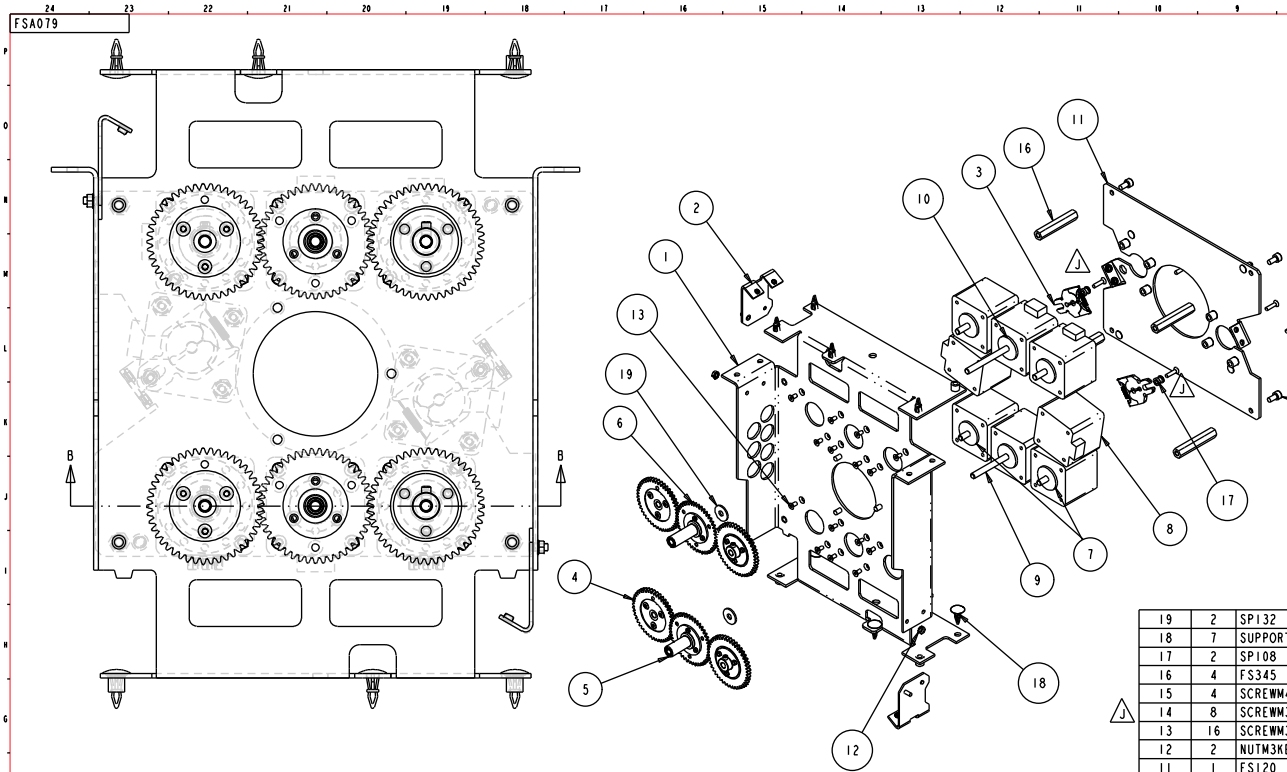


PRODUCTION PRINT

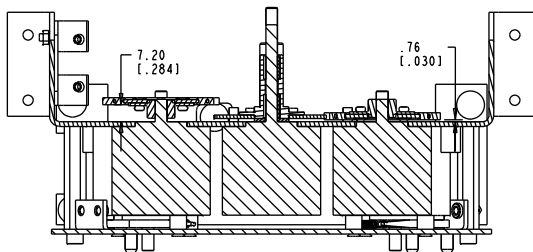
High End Systems

4/21/2004

By: Lee Fredrickson



SCALE 0.500



SECTION B-B

REV.	DESCRIPTION	DATE	ENG	ECO #	APPR
F	CHANGE MOTORS TO SMC MOON MOTORS: 99270046 (MR100_07) NOW: 99270057 (MR102_05) 99270045 (MR100_02) NOW: 99270054 (MR102_02) 99270036 (MR100_01) NOW: 99270053 (MR102_01) 99270047 (MR100_04) NOW: 99270058 (MR102_06)	20JAN03	LR	#1161	KC
G	CHANGE MOTORS TO NMB ALNICO MOTORS: 99270057 (MR102_05) NOW: 99270078 (MR108_04) 99270054 (MR102_02) NOW: 99270076 (MR108_02) 99270053 (MR102_01) NOW: 99270075 (MR108_01) 99270058 (MR102_06) NOW: 99270079 (MR108_05)	03DEC03	LR	#1396	DP
H	DELETE 2x KEPNUTS ;:ADD STANDOFF;:FS120 NOW HAS CLEARANCE HOLES ADDED FOR STANDOFF	07APR04	LR	#1512	DF
J	REPLACE SOCKET CAP SCREWS W/FLAT HEAD SCREWS	08APR04	LR	#1518	DF

NOTES:

- PARTS TO BE FREE OF BURRS AND/OR SHARP EDGES PRIOR TO ASSEMBLY
- ORIENT MOTORS AS SHOWN BEFORE SECURING

ITEM NO.	QTY.	FILENAME	PART NO.	REV	DESCRIPTION
19	2	SPI32	90706083	A	WASHER, THRUST, OPTICAL MODULE ASSY
18	7	SUPPORT_CRLCBSRE_4.01	90702207		STANDOFF, PCB NYLON .250
17	2	SPI108	90702122	++	STANDOFF, MOTOR DAMPER
16	4	FS345	90702209	-	STANDOFF, FLAG MOTOR HEX
15	4	SCREWM4AC8SS	91100408		SCREW, M4 SOCKET CAP 08 SS
14	8	SCREWM3AF12BZ	91040312		SCREW, M3 SOCKET CSNK FLAT 12 BZ NYTEMP
13	16	SCREWM3AF06BZ	91040306		SCREW, M3 SOCKET CSNK FLAT 06 BZ NYTEMP
12	2	NUTM3KEP	91201203		NUT, M3 KEPS
11	1	FS120	80071630	A	MOUNT, FLAG MOTOR
10	1	MR108_05	99270079	-	MOTOR, STEP 2PH MET S17 50.8mm ALNICO NMB
9	1	MR108_04	99270078	-	MOTOR, STEP 2PH MET S17 43.5mm ALNICO NMB
8	4	MR108_02	99270076	-	MOTOR, STEP 2PH MET S17 15.1mm ALNICO NMB
7	2	MR108_01	99270075	-	MOTOR, STEP 2PH MET S17 11.5mm ALNICO NMB
6	1	FSA042	99430074	-	GEAR, ASSY COAXIAL UPPER, COLORMIX
5	1	FSA041	99430066	-	GEAR, ASSY COAXIAL LOWER, COLORMIX
4	4	FSA030_IGS	99430065	-	GEAR, ASSY 45 TOOTH OUTDRIVE
3	2	SP093	80140026	A	DAMPER, MOTOR BRAKE ARAMID ASSY.
2	2	FS139	99260349	B	BRACKET, SENSOR MOUNT COLOR WHEELS
1	1	FS130	80071600	B	BRACKET, MOUNTING COLOR MIX

UNLESS OTHERWISE SPECIFIED: DIMENSIONAL TOLERANCES: 0 PLACE DECIMAL = ±0.38 1 PLACE DECIMAL = ±0.25 2 PLACE DECIMALS = ±0.13 ANGLES = ±0.5°	RELEASE DATE: 20JAN01 ENG: D FRANKLIN ME: MEG: DESCRIPTION: COLORMIX, ASSY DRIVETRAIN TURNKEY	CE: OA: DRW: L ROESSLER	High End 2105 GRACY FARMS LANE AUSTIN, TEXAS 78758 (512) 836-2242 FAX (512) 832-4128 http://www.highend.com	LR LIGHTWAVE RESEARCH
FOR PAINTED PARTS REFER TO ENG. SPEC. MANUAL WI-0592	MATERIAL: CHARTED	FINISH: NA	PART NO. 80190083 DRAWING NO. FSA079 REV. J	
MIN. DRAFT	INTERPRET DIMENSIONS PER ASME Y14.5M-1994 THIRD ANGLE PROJECTION DIMENSIONS ARE IN MILLIMETERS	SI METRIC A1	DO NOT SCALE	SCALE: 1.000
			SHEET: 1 OF 1	

PROPRIETARY NOTICE:
THIS DOCUMENT CONTAINS CONFIDENTIAL AND PROPRIETARY INFORMATION OF HIGH END SYSTEMS INC., (ALSO DBA LIGHTWAVE RESEARCH) AND IS GIVEN TO THE RECEIVER IN CONFIDENCE. THE RECEIVER ACCEPTS AND AGREES THAT, EXCEPT AS AUTHORIZED BY HIGH END SYSTEMS, THE RECEIVER WILL NOT PERMIT THE USE OF THE DOCUMENT OR ANY COPY THEREOF OR THE INFORMATION THEREIN, WILL NOT COPY OR PERMIT COPYING THE DOCUMENT OR THE INFORMATION THEREIN, AND WILL UPON COMPLETION OF THE NEED TO RETAIN THE DOCUMENT, OR UPON DEMAND, RETURN THE DOCUMENT WITHOUT RETAINING ANY OF THE INFORMATION CONTAINED THEREIN IN ANY FORM WHATSOEVER.