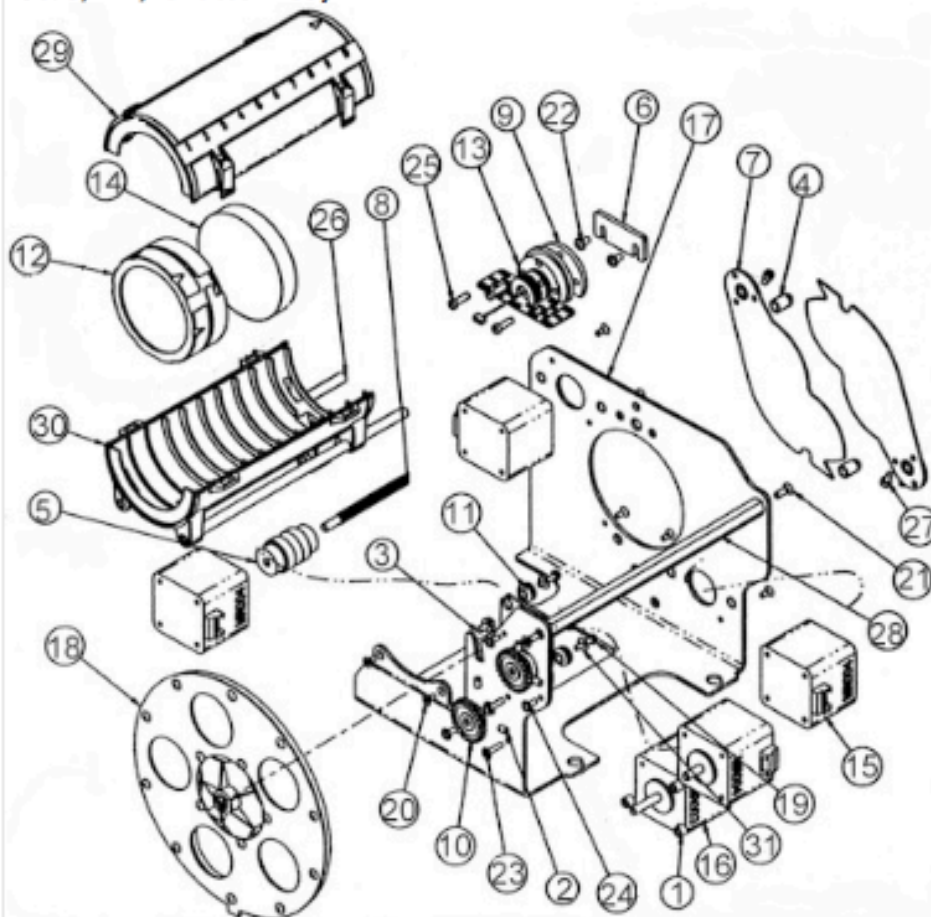


Technobeam®

Focus/ FX/ Shutter Assy.



- | | | |
|-----|----------|--|
| 1. | 90702035 | Spacer 3/8 x 3/16 |
| 2. | 90710011 | Set Screw, 6 - 32 x 1/4 |
| 3. | 90704034 | Bolt, Hex 6 - 32 x 1/4 |
| 4. | 90724007 | Cap, Vinyl |
| 5. | 90701137 | Coupler, Rubber |
| 6. | 99220011 | Cover Plate, LAD |
| 7. | 80210012 | Flag, Shutter Assy. |
| 8. | 90721005 | Screw, Focus Drive |
| 9. | 90701123 | Gasket, LAD Mount |
| 10. | 99430009 | Gear, Effects Drive |
| 11. | 90410088 | Grommet (focus motor mount) |
| 12. | 80160034 | Lens, Rear Assy. |
| 13. | 80430060 | LAD Assy. |
| 14. | 99090032 | Lens, 13 Degree Front |
| 15. | 99270070 | Motor, 2V |
| 16. | 99270071 | Motor, 3V |
| 17. | 80071348 | Mount, Optical Assy. (iris style) |
| 18. | 80190073 | Wheel, Effects (no glass) With Retainer Springs |
| 19. | 90709119 | Screw, Phil Pan 4 - 40 x 1/2 (focus motor mount) |
| 20. | 90711003 | Screw, Phil Flat 4 - 40 x 1/4 |
| 21. | 90711005 | Screw, Phil Flat 6 - 32 x 3/8 |
| 22. | 90709101 | Screw, Phil Pan 6 - 32 x 1/4 With Star Washer |
| 23. | 90709119 | Screw, Phil Pan 4 - 40 x 1/2 |
| 24. | 90709118 | Screw, Phil Pan 4 - 40 x 5/16 |
| 25. | 90713005 | Screw, Slot Nylon 6 - 32 x 7/16 |
| 26. | 99260115 | Shaft, Lens Tube |
| 27. | 90707045 | Socket Cap 6 - 32 x 1/4 |
| 28. | 90702111 | Standoff, Hex 7.135" |
| 29. | 99260113 | Lens Tube top |
| 30. | 99260114 | Lens Tube Bottom |
| 31. | 90706032 | Washer, Flat #4 (focus motor mount) |