

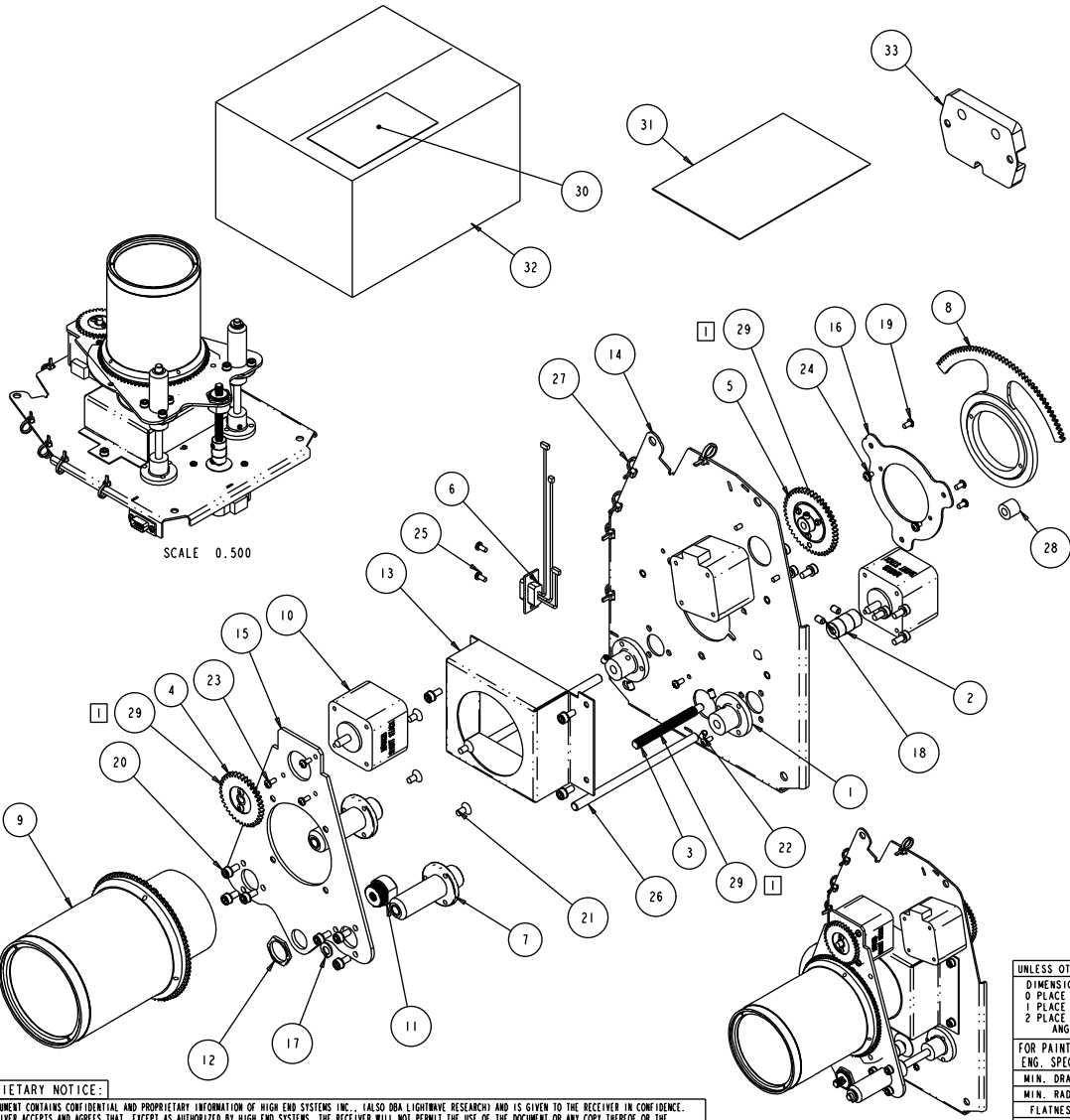
# PRODUCTION PRINT

High End Systems

4/5/2004

By: Lee Fredrickson

24	23	22	21	20	19	18	17	16	15	14	13	12	11	10	9	8	7	6	5	4	3	2	1			
CSA040																					REV.	DESCRIPTION	DATE	ENG	ECO #	APPR
																					A	CREATE NEW DRAWING, RELEASE AT REV 'A'	05APR04	LR		



NOTE:  
 [1] APPLY .012 OZ. KRYTON LUBRICANT 99250003 3 PLCS. AS INDICATED

ITEM NO.	QTY.	FILENAME	PART NO.	REV	DESCRIPTION
33	1	CS263	80071808	-	COUNTERWEIGHT, ZOOM ASSY, BLK, SP, CS
32	1	NA	99320146	-	BOX, ZOOM KIT, STUDIO SPOT 575
31	1	NA	60600233	I	INSTRUCTION, STUDIO SPOT 575 ZOOM LENS
30	1	NA	99310401	-	LABEL, BOX, STUDIO SPOT ZOOM LENS KIT
29	AR	NA	99250004	-	GREASE, KRYTOX FLUORINATED ( OZ ) GPL-225
28	1	SP056	90717024	-	TUBING, RED SILICONE, 3/16 ID X 1/4 OD
27	5	TIE.WRAP3-4	99330007	I	TIE WRAP 3in, 4in, 10SC BLK
26	2	CS316	99260413	-	SHAFT, SUPPORT, ZOOM, SP
25	2	SCREW4-20PP250SZ	90709129	-	SCREW, PHIL PAN #4 X 1/4 SZ
24	2	SCREW4-40PPW188BZ	90709139	-	SCREW, PHIL PAN 4-40 X 3/16 W/STAR WSHR BZ
23	7	SCREW4-40PP250SBZP	90709073	-	SCREW, PHIL PAN 4-40 X 1/3 M/S BZ PATCH
22	4	SCREWM4AS6BZ	91030406	-	SCREW, M4 SOCKET SET 06 BZ NYTEMP
21	4	SCREWM4AF8BZ	91040408	I	SCREW, M4 SOCKET CSNK FLAT 08 BZ NYTEMP
20	15	SCREWM4AC8BZ	91000408	-	SCREW, M4 SOCKET 08 BZ SEMS
19	3	SCREWM3AB06BZ	91010306	-	SCREW, M3 BUTTON 06 BZ NYTEMP
18	2	SCREW8-32SET250BZFLATPT	90707091	-	SCREW, 8-32 SOCKET SET, 1/4 BZ FLAT POINT
17	1	CS541	90701339	-	RING, RETAINING, GROOVELESS, 6MM, SP
16	1	SP094	80071250	A	PLATTEN, IRIS ASSEMBLY MOUNT
15	1	CS187	80071788	-	PLATE, MOUNTING, ZOOM LENS, BLK, SP
14	1	CS186	80071787	-	PLATE, MOUNTING, ZOOM ASM, BLK, SP
13	1	CS188	80071789	-	PLATE, LIGHT BLOCK, ZOOM ASM, BLK, SP
12	1	NUT58-24LPS	90703053	-	NUT, PANEL MOUNT 5/8-24 X 3/32 BRASS
11	1	SP096	90703052	C	NUT, LEAD SCREW, 1/4-16 4 START
10	3	MR0026	99270026	I	MOTOR, NMB 17PM-K002-06V
9	1	SP658	80160058	I	LENS, ZOOM ASSY EF 67-110
8	1	SP091	99290018	-	IRIS, I4 LEAVE 1.775 ID / .1 WAV
7	2	CSA039	80570023	-	HOUSING, ASSY, ZOOM BEARING, SP
6	1	CS705	80470214	-	HARNES, WIRE UPPER DRIVE MTRS, ZOOM
5	1	CSA072	99430041	I	GEAR, ASSY 45T W/HUB & DOMED RIVETS SP
4	1	FFA006	99430102	-	GEAR, DRIVE- OVERMOLD 36 TOOTH (FRAMING)
3	1	CS517	90721006	I	FOCUS DRIVE SCREW, 7.11 [ .280 ] LG. SHANK
2	1	SP191	90701149	C	COUPLER, .88 SLIM-LINE, VIBRATION CONTROL
1	2	CS325	99260412	-	COLLAR, MOUNTING, SHAFT, ZOOM, SP
ITEM NO.	QTY.	FILENAME	PART NO.	REV	DESCRIPTION

BILL OF MATERIALS

**PROPRIETARY NOTICE:**  
 THIS DOCUMENT CONTAINS CONFIDENTIAL AND PROPRIETARY INFORMATION OF HIGH END SYSTEMS INC., (ALSO DBA LIGHTWAVE RESEARCH) AND IS GIVEN TO THE RECEIVER IN CONFIDENCE. THE RECEIVER ACCEPTS AND AGREES THAT, EXCEPT AS AUTHORIZED BY HIGH END SYSTEMS, THE RECEIVER WILL NOT PERMIT THE USE OF THE DOCUMENT OR ANY COPY THEREOF OR THE INFORMATION THEREIN, WILL NOT COPY OR PERMIT COPYING THE DOCUMENT WILL NOT DISCLOSE TO OTHERS EITHER THE DOCUMENT OR THE INFORMATION THEREIN, AND WILL UPON COMPLETION OF THE NEED TO RETAIN THE DOCUMENT, OR UPON DEMAND, RETURN THE DOCUMENT WITHOUT RETAINING ANY OF THE INFORMATION CONTAINED THEREIN IN ANY FORM WHATSOEVER.

UNLESS OTHERWISE SPECIFIED: DIMENSIONAL TOLERANCES: 0 PLACE DECIMAL = ±0.38 1 PLACE DECIMAL = ±0.25 2 PLACE DECIMALS = ±0.13 ANGLES = ±0.5°	RELEASE DATE: APRIL 5, 2004 ENG: M STULTZ ME: MEG:	CE: OA: DRW: K. BICKERS	High End 2105 GRACY FARMS LANE AUSTIN, TEXAS 78758 (512) 836-2242 FAX (512) 832-4128 ***** http://www.highend.com	LR LIGHTWAVE RESEARCH
FOR PAINTED PARTS REFER TO ENG. SPEC. MANUAL WI-0592	ACC. LENS MODULE, ZOOM, SP	MATERIAL: CHARTED	FINISH: NA	
MIN. DRAFT	INTERPRET DIMENSIONS PER ASME Y14.5M-1994 THIRD ANGLE PROJECTION DIMENSIONS ARE IN MILLIMETERS	SI METRIC A1	PART NO. 39040002	DRAWING NO. CSA040
DO NOT SCALE	SCALE: 0.630	SHEET: 1 OF 1	REV. A	