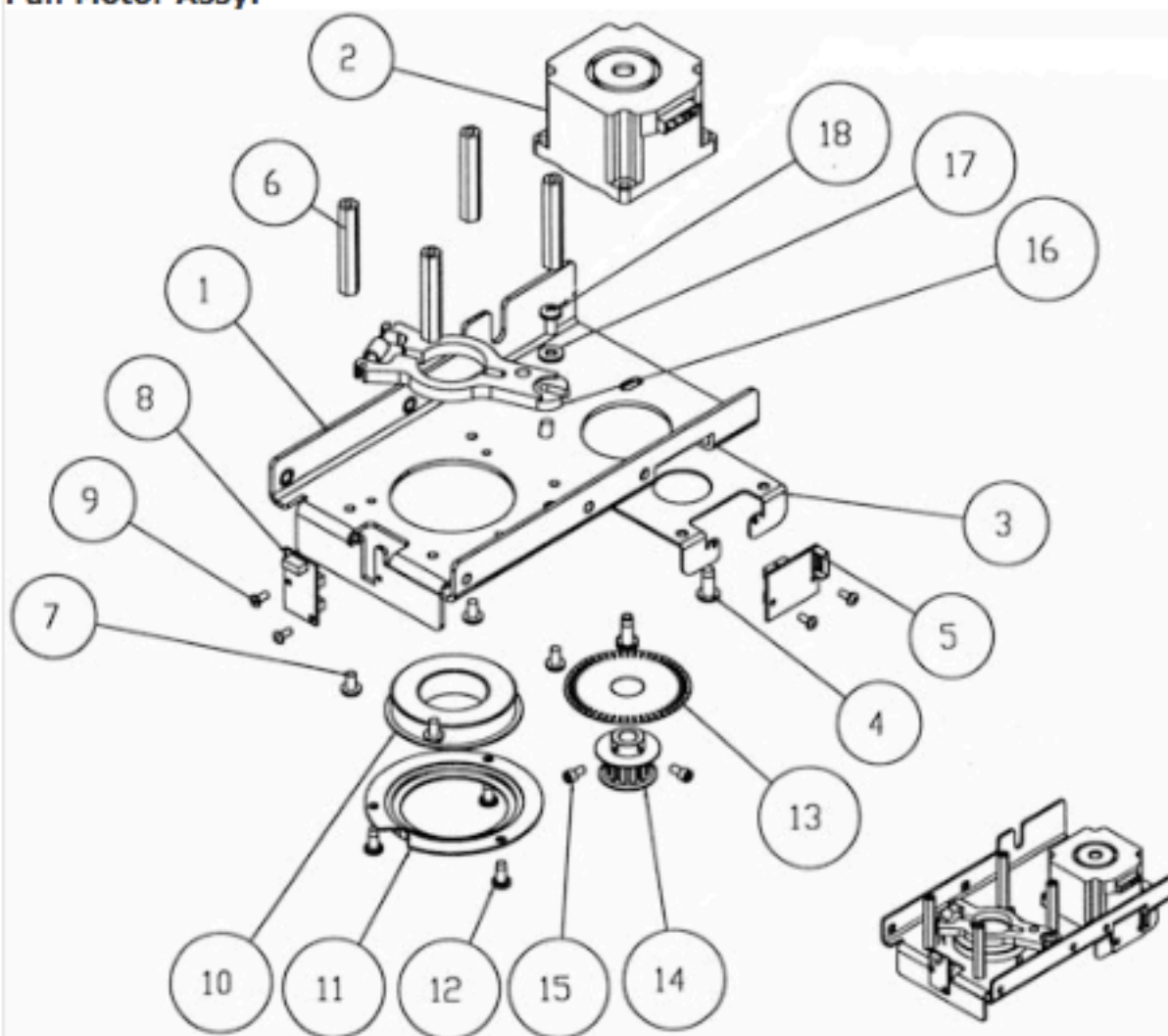


250 Series Pan Motor Assy.



- | | | |
|-----|-----------|--|
| 1. | 99260251 | Plate, Lower Bearing |
| 2. | 99270028 | Motor, Three Phase Pan/Tilt |
| 3. | 99260325 | Plate, Encoder/Motor Mount |
| 4. | 90709124 | Screw, Phil Pan #10 x 1/2 |
| 5. | 80010103 | Board, Dual Sensor |
| 6. | 90702132 | Standoff, Pan Bearing Support |
| 7. | 90709136 | Screw, Phil Pan 8 - 32 x 5/16 With Star Washer |
| 8. | 80040019T | Board, Sensor Assy. |
| 9. | 90709129 | Screw, Phil Pan #4 x 1/4 |
| 10. | 90719068 | Bearing |
| 11. | 99260267 | Cap, Bearing Support |
| 12. | 90709142 | Screw, Phil Pan #8 x 3/8 |
| 13. | 99180029 | Encoder Wheel |
| 14. | 99430017 | Pinion Gear |
| 15. | 90707045 | Socket Cap 6 - 32 x 1/4 |
| 16. | 80140028 | Damper, Shaft Tensioner |
| 17. | 90706012 | Washer, Flat #10 |
| 18. | 90708014 | Screw, Shoulder Socket 8 - 32 x 3/16 |