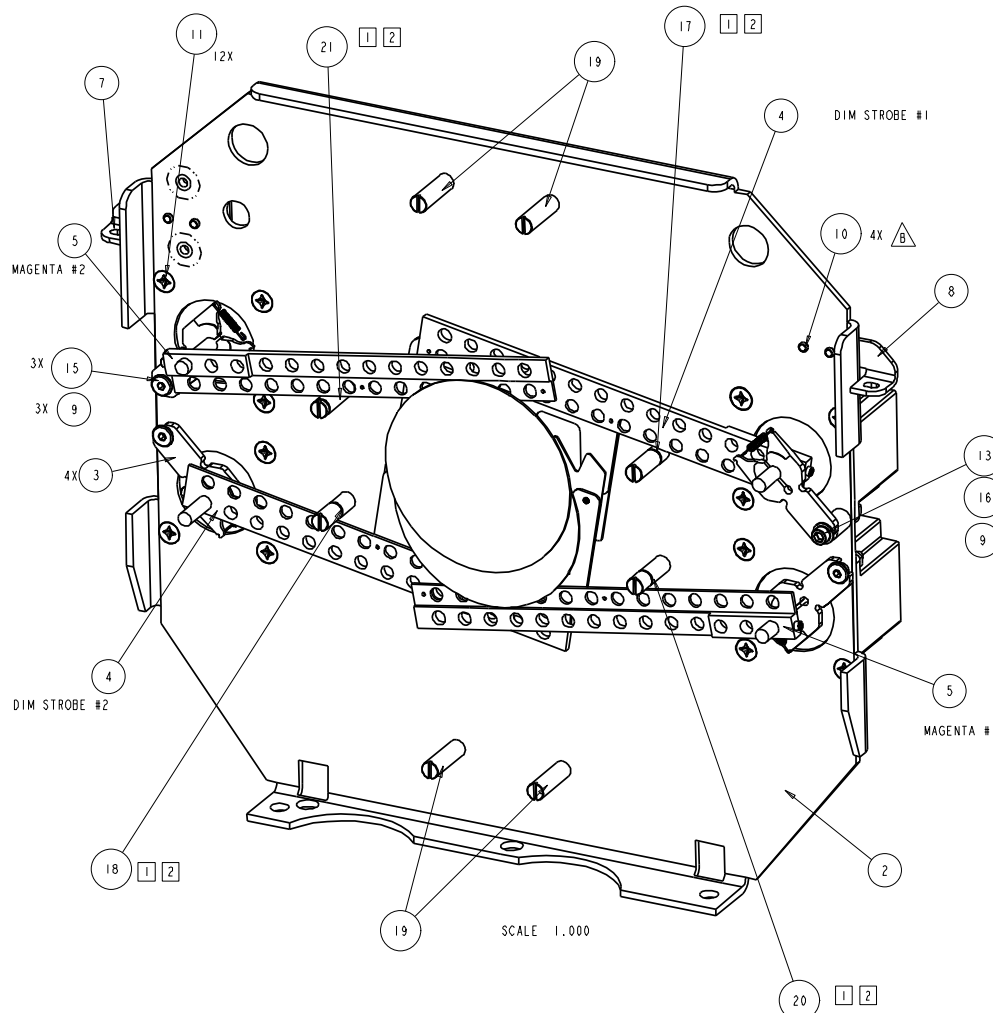


TWA034



| REV. | DESCRIPTION | DATE | ENG | ECO # | APPR |
|------|--|---------|-----|-------|------|
| 1 | CREATE DRAWING | 3MAY07 | MB | | |
| 2 | REVISED WITH GROOVED STANDOFFS AND MOTOR TILT WASHERS | 5JUN07 | MB | | |
| 3 | CHANGE TO INDIVIDUALLY GROOVED FLAG STOPS, SCREW 91000416 WAS 91000406, 2X | 12JUN07 | MB | | |
| 4 | UPDATED DRAWING, NOTES | 3JUL07 | MB | | |
| - | RELEASED DRAWING FOR INTERNAL SERVICE USE | 01AUG07 | KLB | | KDB |
| A | CHANGED ITEM 1 FS719 SYMIX# 80040024 TO 80040024EF | 13AUG07 | KLB | #2317 | KDB |
| B | REMOVE FLATHEAD RIVETS AND REPLACE WITH DOME HEAD | 16JUL08 | PP | #2535 | |

NOTES:

- 1. ENERGIZED MOTORS ARE REQUIRED TO PRODUCTION HOME THE FLAG ASSEMBLIES AGAINST THE CLOSED POSITION STOPS.
- 2. ALIGN TOP EDGE OF FLAG ASSEMBLY TO BOTTOM GROOVE EDGE FOR EACH MAGENTA AND DIM/STROBE FLAG.

| | | | | |
|----|----|-------------------------------|------------|--|
| 23 | 4 | WASHER, 265, 500, SS | 90706020 | WASHER, 1/4 FLAT SS .265x .50x .064 |
| 22 | 1 | WASHERB-32S | 90706009 | WASHER, #8 FLAT SS .174 X .375 X .032 |
| 21 | 1 | TW393 | 85000268 | STOP, MAGENTA 2 |
| 20 | 1 | TW392 | 85000267 | STOP, MAGENTA 1 |
| 19 | 4 | TW373 | 85000271 | STOP, M4, L-25.4 |
| 18 | 1 | TW391 | 85000266 | STOP, DIM/STROBE #2 |
| 17 | 1 | TW390 | 85000265 | STOP, DIM/STROBE #1 |
| 16 | 1 | TW377 | 90702375 | STANDOFF, BRAKE MOUNT |
| 15 | 8 | SCREWM4AF06BZ | 91040406 | SCREW, M4 SOCKET CSNK FLAT 06 BZ W/PATCH |
| 14 | 1 | SCREWM4AC30W-BZ | 91000430 | SCREW, M4 SOCKET CAP 30 BZ SEMS |
| 13 | 2 | SCREWM4AC16W-BZ | 91000416 | SCREW, M4 SOCKET CAP 16 BZ SEMS |
| 12 | 12 | SCREW12-24PF500TL-SZ | 90711060 | SCREW, 12-24 PHIL FLAT 1/2 THRD ROLL, TRI LOBE |
| 11 | 3 | TW378 | 90702373 | SCREW, SHOULDER, M4, MOTOR MOUNT |
| 10 | 4 | RIVET43-45DMG-SS | 90701388 | RIVET, 1/8 DOMED, .188-.250, 18-8 STAINLESS |
| 9 | 4 | NUTM4KEP | 91201204 | NUT, M4 KEPS |
| 8 | 1 | TW664 | 99260508 | MOUNT, ANGLE, RIGHT |
| 7 | 1 | TW663 | 99260507 | MOUNT, ANGLE, LEFT |
| 6 | 4 | ME80_NMB_23KM-K286-T2IV_MOTOR | 99270083 | MOTOR, STEPPER NMB 23KM-K286-01V |
| 5 | 2 | TWA072 | 80560043 | FLAG, ASSY, MAGENTA SG |
| 4 | 2 | TWA096 | 80560040 | FLAG ASSEMBLY, DIM/STROBE |
| 3 | 4 | TWA083 | 80140039 | DAMPER ASSY, MTR BRAKE, HI-TEMP, .25 DIA |
| 2 | 1 | TW180 | 80070467 | BULKHEAD, DIM/STROBE |
| 1 | 1 | FS719 | 80040024EF | BOARD ASSY TEMP SENSOR |

| ITEM NO. | QTY. | FILENAME | PART NO. | DESCRIPTION |
|---|------|-------------------------------|----------------|---------------|
| BILL OF MATERIALS | | | | |
| UNLESS OTHERWISE SPECIFIED | | RELEASE DATE: 01AUG07 | CE: | |
| DIMENSIONAL TOLERANCES: | | ENG: MIKE BELL | QA: | |
| 0 PLACE DECIMAL = ±0.38 | | ME: | | |
| 1 PLACE DECIMAL = ±0.25 | | MEG: | DRW: MIKE BELL | |
| 2 PLACE DECIMALS = ±0.13 | | DESCRIPTION: | | |
| ANGLES = ±0.5° | | DIM/STROBE BULKHEAD ASSEMBLY | | |
| FOR PAINTED PARTS REFER TO ENG. SPEC. MANUAL W1-0592 | | MATERIAL: | FINISH: | |
| ALL COMPONENTS, MATERIALS AND FINISHES TO BE ROHS COMPLIANT | | CHARTED | | NA |
| MIN. DRAFT | | INTERPRET DIMENSIONS PER | PART NO. | DRAWING NO. |
| MIN. RADII | | ASME Y14.5M-1994 | 80430099 | TWA034 |
| FLATNESS | | THIRD ANGLE PROJECTION | | |
| THICKNESS | | DIMENSIONS ARE IN MILLIMETERS | | |
| VOLUME | | | DO NOT SCALE | SCALE: 0.333 |
| | | | | SHEET: 1 OF 2 |

High End Systems
 2105 GRACY FARMS LANE
 AUSTIN, TEXAS 78158
 (512) 836-2242
 FAX (512) 832-4128
 http://www.highend.com

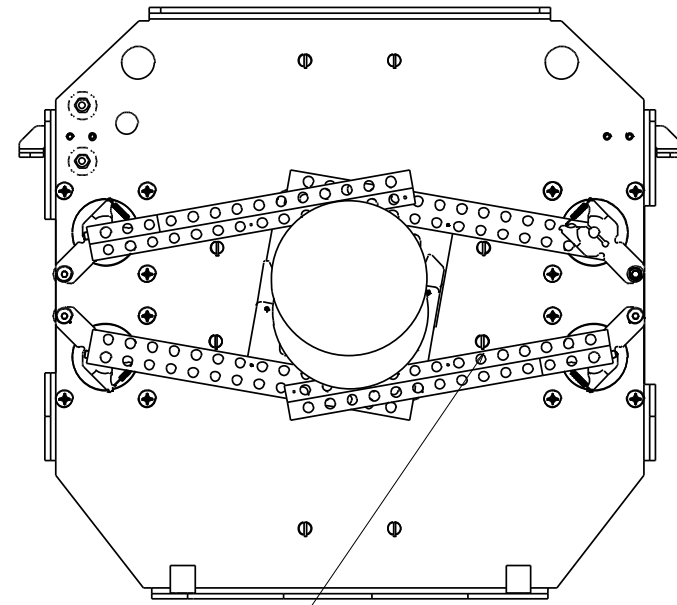
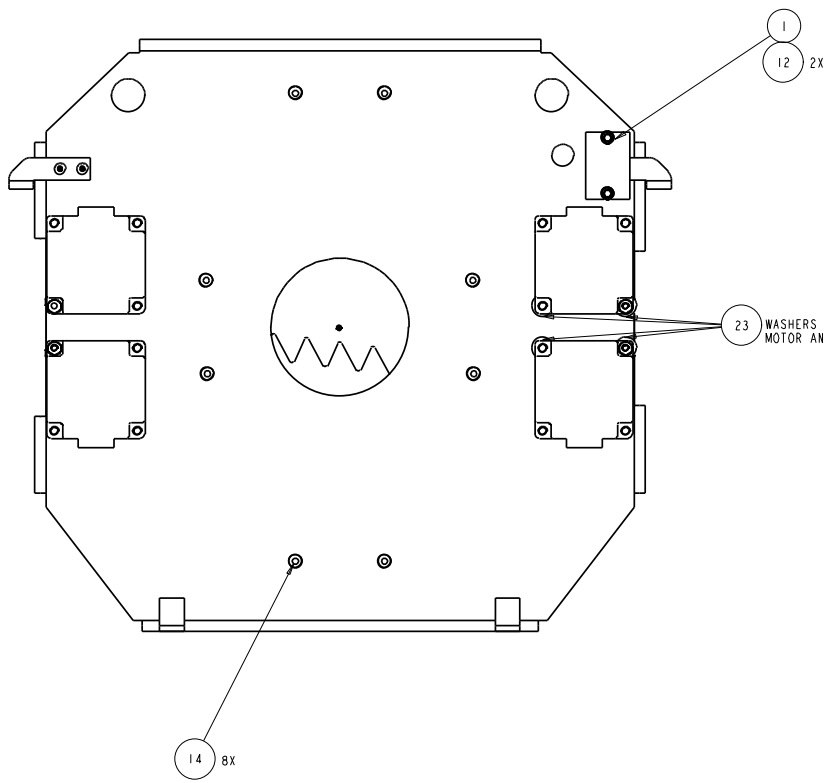


PROPRIETARY NOTICE: THIS DOCUMENT CONTAINS CONFIDENTIAL AND PROPRIETARY INFORMATION OF HIGH END SYSTEMS INC., (ALSO DBA LIGHTWAVE RESEARCH) AND IS GIVEN TO THE RECEIVER IN CONFIDENCE. THE RECEIVER ACCEPTS AND AGREES THAT, EXCEPT AS AUTHORIZED BY HIGH END SYSTEMS, THE RECEIVER WILL NOT PERMIT THE USE OF THE DOCUMENT OR ANY COPY THEREOF OR THE INFORMATION THEREIN, WILL NOT COPY OR PERMIT COPYING THE DOCUMENT OR THE INFORMATION THEREIN, AND WILL UPON COMPLETION OF THE NEED TO RETURN THE DOCUMENT, OR UPON DEMAND, RETURN THE DOCUMENT WITHOUT RETAINING ANY OF THE INFORMATION CONTAINED THEREIN IN ANY FORM WHATSOEVER.

Production Print
High End Systems

7/22/2008

Issued By: Lee Fredrickson



ALIGN TOP FLAG SURFACE TO BOTTOM EDGE OF GROOVE, 4 PL

PROPRIETARY NOTICE:
 THIS DOCUMENT CONTAINS CONFIDENTIAL AND PROPRIETARY INFORMATION OF HIGH END SYSTEMS INC., (ALSO DBA LIGHTWAVE RESEARCH) AND IS GIVEN TO THE RECEIVER IN CONFIDENCE. THE RECEIVER ACCEPTS AND AGREES THAT, EXCEPT AS AUTHORIZED BY HIGH END SYSTEMS, THE RECEIVER WILL NOT PERMIT THE USE OF THE DOCUMENT OR ANY COPY THEREOF OR THE INFORMATION THEREIN, WILL NOT COPY OR PERMIT COPYING THE DOCUMENT OR THE INFORMATION THEREIN, AND WILL UPON COMPLETION OF THE NEED TO RETAIN THE DOCUMENT, OR UPON DEMAND, RETURN THE DOCUMENT WITHOUT RETAINING ANY OF THE INFORMATION CONTAINED THEREIN IN ANY FORM WHATSOEVER.

| | | | | | |
|---|--|--|----------------|---|--|
| UNLESS OTHERWISE SPECIFIED | | RELEASE DATE: 01AUG07 | CE: | 2105 GRACY FARMS LANE AUSTIN, TEXAS 78158 (512) 836-2242 FAX (512) 832-4128 ***** http://www.highend.com | |
| DIMENSIONAL TOLERANCES: 0 PLACE DECIMAL = ±0.38 1 PLACE DECIMAL = ±0.25 2 PLACE DECIMALS = ±0.13 ANGLES = ±0.5° | | ENG: MIKE BELL | QA: | | |
| FOR PAINTED PARTS REFER TO ENG. SPEC. MANUAL WI-0592 | | ME: | DRW: MIKE BELL | DESCRIPTION: DIM/STROBE BULKHEAD ASSEMBLY | |
| ALL COMPONENTS, MATERIALS AND FINISHES TO BE RoHS COMPLIANT | | MEG: | | MATERIAL: CHARTED | |
| MIN. DRAFT | | FINISH: NA | | PART NO. 80430099 | |
| MIN. RADIUS | | DRAWING NO. TWA034 | | REV. B | |
| FLATNESS | | INTERPRET DIMENSIONS PER ASME Y14.5M-1994 THIRD ANGLE PROJECTION DIMENSIONS ARE IN MILLIMETERS | | SI METRIC A1 DO NOT SCALE SCALE: 0.333 SHEET: 2 OF 2 | |
| THICKNESS | | | | | |
| VOLUME | | | | | |