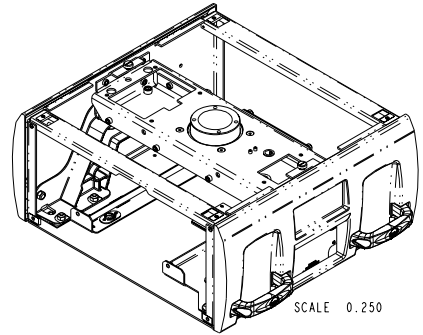
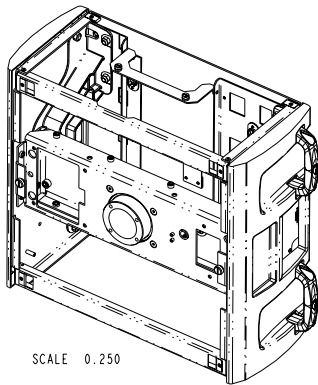
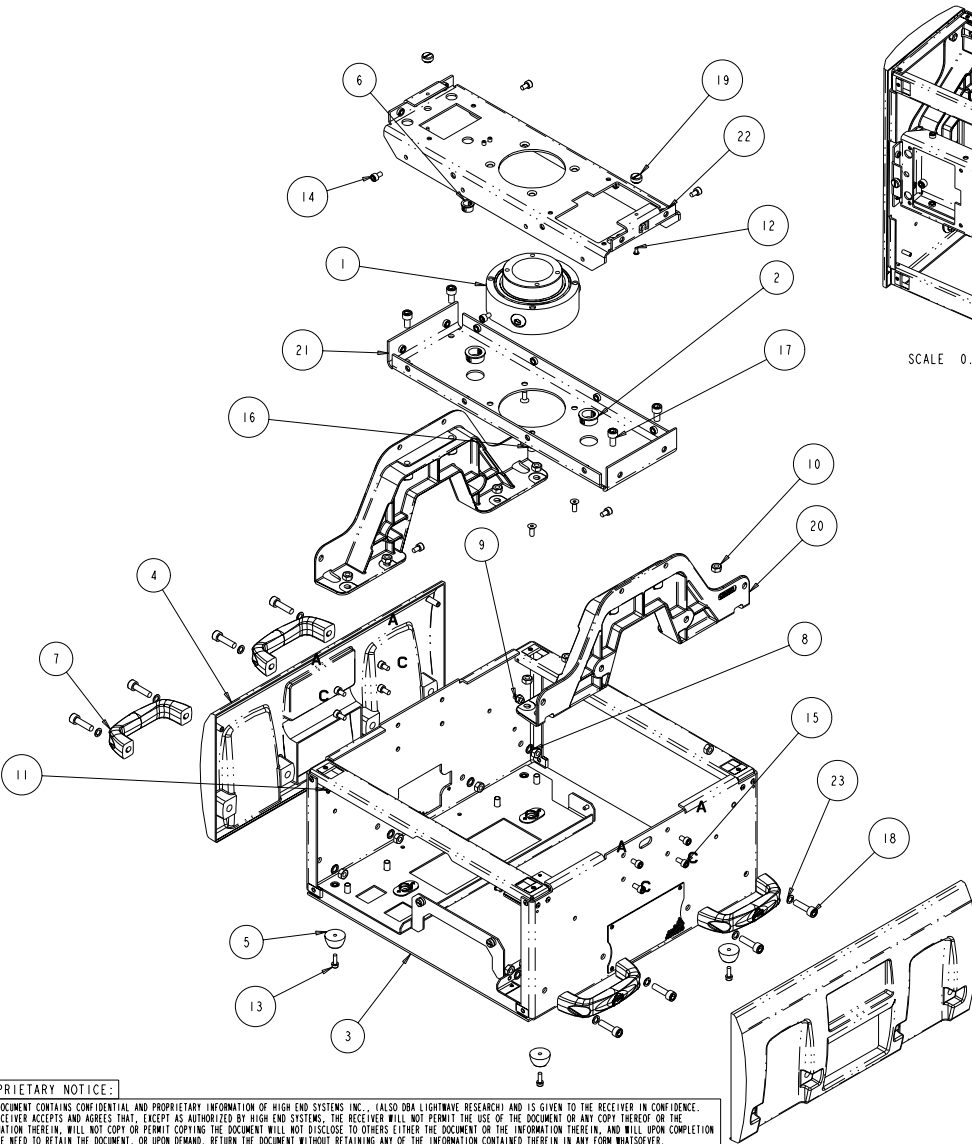


DBA011

REV.	DESCRIPTION	DATE	ENG	ECO #	APPR
4	WAS 06 LG. NOW 08 LG SCREW FOR TOP COVR HOLDERS	21SEP04	LR		
5	M8 X 25 NOW M8 X 30.;ADD M8 LOCK WASHERS	01OCT04	LR		
6	ADD/ CORRECT HARDWARE	06OCT04	LR		
7	ADD/CORRECT HARDWARE	18NOV04	DF		



ITEM NO.	QTY.	FILENAME	PART NO.	REV	DESCRIPTION
23	8	WASHER318_500_040	90706101		WASHER, .040 X .318 ID X .500 OD
22	1	DB105	99260455	-	SUPPORT, UPPER, PAN BEARING DL2
21	1	DB104	99260454	-	SUPPORT, LOWER, PAN BEARING DL2
20	2	DB250	99260452	A	SUPPORT, BEAM, CAST TOP BOX, DL2
19	2	DB306	80071851	A	STUD, PANEL RETAINER, DL2
18	8	SCREWM8AC30SS	91100830	.	SCREW, M8 SOCKET 30 SS
17	4	SCREWM8AC16SSP	91100816	.	SCREW, M8 SOCKET 16 SS W/PATCH
16	8	SCREWM6AF16SBZ	91040616	.	SCREW, M6 SOCKET CSNK FLAT 16 BZ NYTEMP
15	4	SCREWM6AC12SSP	91100612	.	SCREW, M6 SOCKET 12 SS W/PATCH
14	12	SCREWM6AC10SS	91100610	.	SCREW, M6 SOCKET 10 SS W/PATCH
13	4	SCREWM5AC16BZ	91000516	.	SCREW, M5 SOCKET CAP 16 BZ SEMS
12	2	SCREWM4AB08BZP	91010408	.	SCREW, M4 BUTTON 08 BZ W/PATCH
11	4	SCREW6-19PPB0380BZ	90709117	-	SCREW, 6-19 PHIL PAN PLASTITE 3/8 BZ
10	16	NUT-M8X0125S	90703007	-	NUT, M8 HEX NUT SZ
9	1	NUTM6KEP	91201206	-	NUT, M6 KEPS
8	8	WASHER_M8_LOCK_EXT	91109108	.	LOCKWASHER, M8 EXTERNAL TOOTH SZ TS2
7	4	SW214	90720005	A	HANDLE, SMALL W/ LOGO
6	1	BUSHING500SNAP	90410102	-	GROMMET, SNAP BUSHING .50 ID
5	4	RUBBER_FOOT	90410089	-	FOOT, RUBBER STC/NH LONG
4	2	DB201	99220033	-	COVER, SIDE, TOP BOX DL2
3	1	DBA009	80071852	A	CHASSIS ASSY, TOP BOX DL2
2	2	BUSHING-HEYCO-2140	90410030	-	BUSHING, SNAP 1" F100
1	1	DBA035	80460006	-	BEARING ASSY, PAN DL2, LB

UNLESS OTHERWISE SPECIFIED: RELEASE DATE: CE: High End 2105 GRACY FARMS LANE AUSTIN, TEXAS 78758 (512) 836-2242 FAX (512) 832-4128 http://www.highend.com

FOR PAINTED PARTS REFER TO ENG. SPEC. MANUAL WI-0592 MATERIAL: CHARTED FINISH: NA

DESCRIPTION: CHASSIS ASM, TOP BOX DL2

INTERPRET DIMENSIONS PER ASME Y14.5M-1994 THIRD ANGLE PROJECTION DIMENSIONS ARE IN MILLIMETERS

SI METRIC A1 PART NO. INTERNAL DBA011 DRAWING NO. NA REV. NA

VOLUME DO NOT SCALE SCALE: 0.300 SHEET: 1 OF 1

PROPRIETARY NOTICE:
 THIS DOCUMENT CONTAINS CONFIDENTIAL AND PROPRIETARY INFORMATION OF HIGH END SYSTEMS INC., (ALSO DBA LIGHTWAVE RESEARCH) AND IS GIVEN TO THE RECEIVER IN CONFIDENCE. THE RECEIVER ACCEPTS AND AGREES THAT, EXCEPT AS AUTHORIZED BY HIGH END SYSTEMS, THE RECEIVER WILL NOT PERMIT THE USE OF THE DOCUMENT OR ANY COPY THEREOF ON THE INFORMATION THEREIN. WILL NOT COPY OR PERMIT COPYING THE DOCUMENT WILL NOT DISCLOSE TO OTHERS EITHER THE DOCUMENT OR THE INFORMATION THEREIN, AND WILL UPON COMPLETION OF THE NEED TO RETAIN THE DOCUMENT, OR UPON DEMAND, RETURN THE DOCUMENT WITHOUT RETAINING ANY OF THE INFORMATION CONTAINED THEREIN IN ANY FORM WHATSOEVER.